



Sustainable Jersey for Schools
Donna Drewes, PP/AICP
Co-Director
Sustainability Institute at TCNJ
Sustainable Jersey



Sustainable Jersey for Schools

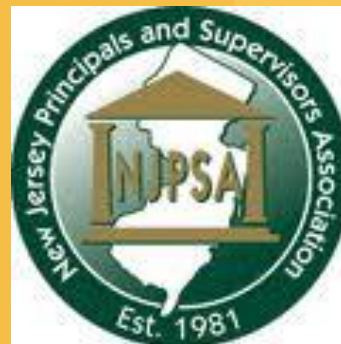


Sustainable Jersey for Schools

- Modeled off of the municipal program
- Free and voluntary
- NJ based and consensus driven
- School level certifications but requires School Board and district level support



Program Partners



Why Participate?



- Framework for action
 - Best practices, guidance and training
 - Technical support resources
 - Small grants



- Positive impact on school community
 - Cost savings
 - Healthier learning environments
 - Student and staff performance



Why Participate?

- Move towards a sustainable future

- Increase recognition and understanding of current and future challenges
- Arm students with knowledge and insights to make wise choices
- Connect STEM education with real-life
- Expose students to future career paths



- Recognize and reinforce progress

- Celebrate accomplishments
- Share successes
- Distinguish your district and school



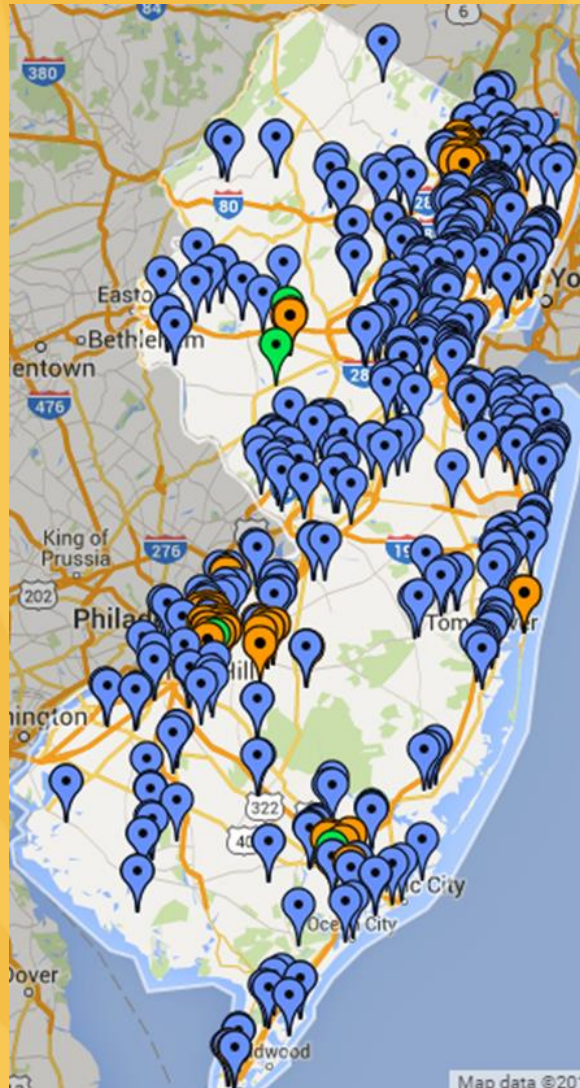
Leverage Success in Other Programs

• Build Additive and Supportive Model

- US Dept. Of Education “GREEN RIBBON SCHOOLS”
- National Wildlife Federation, “EcoSchools”
- NJ Partnership for Healthy Kids
- Alliance for a Healthier Generation
- Lots of other great programs.....



Municipal Schools



Sustainable Jersey Program Participants

SUSTAINABLE JERSEY CERTIFIED SCHOOLS



432 towns, 193 certified 155 Districts, 400 Schools



Program Updates

- Registrations

	April 2015	July 2015	October 2015	February 2016
Districts	64	91	119	155
Schools	192	239	297	400

- Certification Cycles

	March 2015	January 2016	Certified in 2015	Denied In 2015
Districts	20	21	8	N/A
Schools	74	93	20	13
Actions to Review	2,270	1,398		
Certified Schools	59	?		

213 O&M actions submitted: 15% of total submissions





A BRIGHTER FUTURE

one school at a time

ABOUT

ACTIONS & CERTIFICATION

EVENTS & TRAININGS

GRANTS & RESOURCES

MEDIA & COMMUNICATIONS

SUPPORT US

REGISTER



REGISTER YOUR SCHOOL DISTRICT OR SCHOOL

Start the certification process by registering with Sustainable Jersey for Schools.



HEADLINES



Sustainable Jersey for Schools Announces 2015 Champion and Leadership Awards

OCT 20, 2015



Sustainable Jersey for Schools Announces the First 59 Schools to Achieve Sustainability Certification

SEP 28, 2015

ABOUT SUSTAINABLE JERSEY FOR SCHOOLS

Sustainable Jersey for Schools is a certification program for New Jersey public schools that want to go green, conserve resources and take steps to create a brighter future, one school at a time. Learn More ->

PARTICIPATING DISTRICTS & SCHOOLS



120

DISTRICTS



306

SCHOOLS



REGISTER NOW ->

UPCOMING EVENTS



New Jersey School Boards Association Workshop 2015

Atlantic City Convention Center

OCT 27, 2015 - 08:00 AM TO OCT 29, 2015 - 05:00 PM

Five Certification Steps

1

- School district adopts resolution of participation and registers. Superintendent invites district's school principals to participate

2

- School principals register their school with letter of participation signed by principal and superintendent

3

- Green Team created at district or school level

4

- District/School completes certification actions totaling at least 150 points.

5

- Green Team uploads documentation and submits application.



Green Team

- Mandatory Action
- No need to create a new team
- District and/or school level
 - Diverse membership recommended
 - Must have at least two representatives appointed by the union leadership
 - District Green Teams must have school representation
- Successful School Green Teams Webinar available on website



Program Actions: Where Can We Start?

PEOPLE

STUDENT & COMMUNITY OUTREACH

Green Team**

Community Education & Outreach*

Green Fair

"Green" Your Green Fair or School Event

Green Challenges

Civic & Stewardship Volunteer Initiatives

Enrichment Programs through Partnership

DIVERSITY & EQUITY

Breakfast After The Bell

Accessible Communications

Diversity on District Task Forces & Committees

FOOD & NUTRITION

Healthy Food Choices

School Gardens

Promote Locally Grown Foods

STUDENT SAFETY

Safe Routes to School District Policy

School Travel Plan for walking & biking

Pedestrian and Bicycle Safety & Promotion Initiatives

Safe Driving Awareness Programs for High School Students

STUDENT & STAFF WELLNESS

School Wellness Council*

School Health Assessment

Policies to Promote Physical Activity

PROSPERITY

ENERGY EFFICIENCY

Energy Audit*

Building Efficiency Measures*

Energy Tracking & Management

Sustainable Energy Transition Plan

LEADERSHIP & PLANNING

Professional Development for Sustainability*

School Community Asset Mapping

Green Facilities Management Checklist

Green Enhancement of District Strategic Plans

Strategic Plan Implementation of Green Initiatives

District Sustainability Policy

School District Foundation

STUDENT LEARNING*

(only one action in this category will be counted toward priority requirements)

Education for Sustainability K-3*

Education for Sustainability Grades 4-12 Science*

Education for Sustainability Grades 4-12 Math*

Education for Sustainability Grades 4-12 ELA*

Education for Sustainability Grades 4-12 Social Studies*

Education for Sustainability Grades 4-12 Creativity/Arts*

Education for Sustainability Grades 4-12 Health*

PLANET

CLIMATE MITIGATION & RENEWABLE ENERGY

School Carbon Footprint*

On-site Renewable Generation System-Solar

On-site Renewable Generation System-Geothermal

Buy Renewable Electricity

Collaborate with Municipality on Government Energy Aggregation Program

SCHOOL GROUNDS

Biodiversity Audit & Management Plan

Biodiversity Project

Green Infrastructure Assessment & Plan

Green Infrastructure Installation

Sustainable Landscape Design

GREEN DESIGN

Green Building Policy*

Green Building Training

Green Building Survey

Bid New Construction & Major Renovations using Green Standard

Build New/Renovated Project that meets Green Standard

Commissioning Approval for New/Existing Building that meets Green Standard

GREEN PURCHASING

Green Purchasing Policy*

POINTS

10

(5-40)

10

10

10

10

10

10

10

10

10

10

10

10

10

10

20

20

10

10

Types of Actions

- **District Only**
 - District completes these actions and submits them for review
- **School Only**
 - Individual schools complete these actions and submits them for review
- **Either District or School can complete the action**
 - Action must be claimed by the agreed upon entity

Learning Environment	
School Grounds	
Student & Community Outreach	
Student and Staff Wellness	
1 Programs to Promote Physical Activity	Status: Unplanned
10 Points 📌 School Only	Unplanned ▼
1 Staff Wellness Program	Status: Unplanned
10 Points	Unplanned ▼
1 Policies to Promote Physical Activity	Status: Unplanned
10 Points 🏛️ District Only	Unplanned ▼
1 School Health Assessment	Status: Unplanned
20 Points 📌 School Only	Unplanned ▼
1 School Wellness Council	Status: Unplanned
10 Points ★ Priority 📌 School Only	Unplanned ▼
Student Learning	
Student Safety	

District and School Participation

DISTRICT



- District actions **flow down to all** participating schools in the district
- Certification is awarded at the **school level**



Certification Requirements

150

Bronze

- Total of at least 150 points
- Mandatory Green Team
- Implement 2 of 11 priority actions
- Actions completed in 6 of 17 categories

350

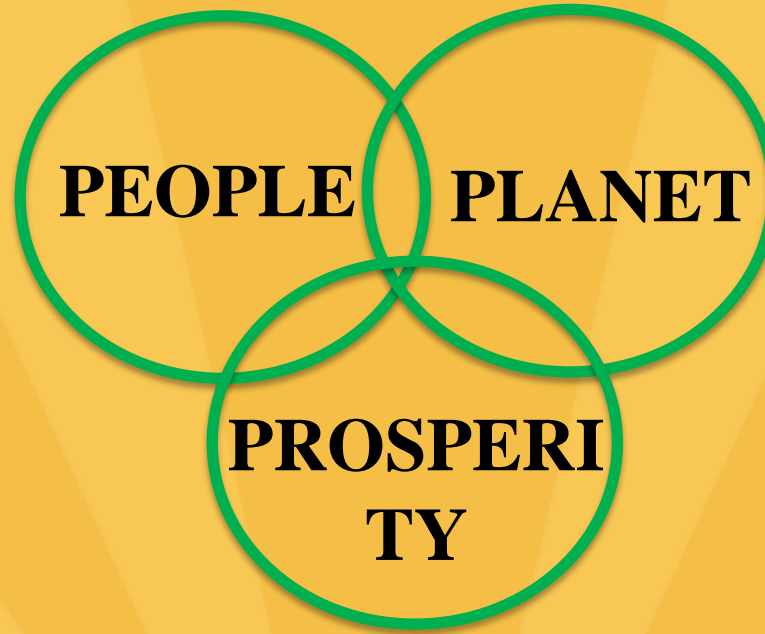
Silver

- Total of at least 350 points
- Mandatory Green Team
- Implement 3 of 11 priority actions
- Actions completed in 8 of 17 categories

Certification Action Categories

PEOPLE

- Diversity & Equity
- Food & Nutrition
- Healthy School Environments
- Safe Routes to School
- Student & Community Outreach
- Student & Staff Wellness



Components of Sustainability

PROSPERITY

- Student Learning
- Energy Efficiency
- Innovation Projects
- Leadership & Planning
- Learning Environment

PLANET

- Climate Mitigation & Renewable Energy
- Green Cleaning
- Green Design
- Green Purchasing
- School Grounds
- Waste Management & Recycling



11 Priority Actions

- Community Education & Outreach
- School Wellness Council
- Indoor Air Quality Review
- Energy Audit
- Building Efficiency Measures
- Professional Development for Sustainability
- Education for Sustainability
- School Carbon Footprint
- Green Building Policy
- Green Purchasing Policy
- Waste Audit



Related Actions for EE Providers

- Green Infrastructure Assessment & Plan
- Green Infrastructure Installation- (rain gardens, water capture and reuse, etc.)
- Civic & Stewardship Volunteer Initiatives
- Enrichment Programs Through Partnership
- School Gardens
- Biodiversity Audit & Plan
- Biodiversity Project



RUTGERS

New Jersey Agricultural
Experiment Station



Rosana Da Silva

Rutgers Cooperative Extension Water Resources Program

rdasilva@envsci.rutgers.edu

EXAMPLES OF SCHOOL GREEN INFRASTRUCTURE INITIATIVES



Water Resources Program



Our mission is to identify and address community water resources issues using sustainable and practical science-based solutions.



Green Infrastructure Assessment & Plan Spotlight

McKinley Community School, New Brunswick, NJ

- In 2015, an impervious cover assessment and reduction action plan was developed for the New Brunswick area by the RCE Water Resources Program which includes several schools within the district. The ICAs and the RAPs include data necessary to obtain points.
- Task 1: Impervious Cover Audit
- Task 2: Determining the Amount of Pervious Surfaces
- Task 3: Identify Where Stormwater goes

MCKINLEY COMMUNITY SCHOOL

Subwatershed: Mile Run
Site Area: 121,864 sq. ft.
Address: 15 Van Dyke Avenue
 New Brunswick, NJ 08901
Block and Lot: Block 596, Lot 5.04



Parking spaces and the asphalt adjacent to the playground can be converted into pervious pavement to infiltrate stormwater. A preliminary soil assessment suggests that more soil testing would be required before determining the soil's suitability for green infrastructure.

Impervious Cover		Existing Loads from Impervious Cover (lbs/yr)			Runoff Volume from Impervious Cover (Mgal)	
%	sq. ft.	TP	TN	TSS	For the 1.25" Water Quality Storm	For an Annual Rainfall of 44"
65	78,611	3.8	39.7	360.9	0.061	2.16

Recommended Green Infrastructure Practices	Recharge Potential (Mgal/yr)	TSS Removal Potential (lbs/yr)	Maximum Volume Reduction Potential (gal/storm)	Peak Discharge Reduction Potential (cu. ft./second)	Estimated Size (sq. ft.)	Estimated Cost
Pervious pavements	0.651	109	47,782	1.80	17,753	\$443,825

Green Infrastructure Assessment & Plan Spotlight

McKinley Community School, New Brunswick, NJ

- Utilizing the ICA and RAP, McKinley Community School already has half of the work done in obtaining points for the Green Infrastructure Assessment and Plan.

New Brunswick City
 Impervious Cover Assessment
McKinley Community School, 15 Van Dyke Avenue



PROJECT LOCATION:



SITE PLAN:

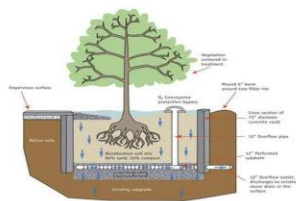


- BIORETENTION SYSTEM:** Bioretention systems should be installed at the rear of the building to capture runoff from the nearby pavement. This will reduce runoff by allowing stormwater to infiltrate naturally and decrease the amount of polluted runoff that goes to the local waterways.
- TREE BOXES:** Tree boxes can be installed in the parking strips to catch the first flush of stormwater and treat the stormwater prior to discharge to the storm sewer system.
- EDUCATIONAL PROGRAM:** The RCE Water Resources Program's *Stormwater Management in Your Schoolyard* can be delivered at the McKinley Community School to educate the community's students about stormwater management and to engage them in designing and building the bioretention systems.

1 BIORETENTION SYSTEM



2 TREE BOX

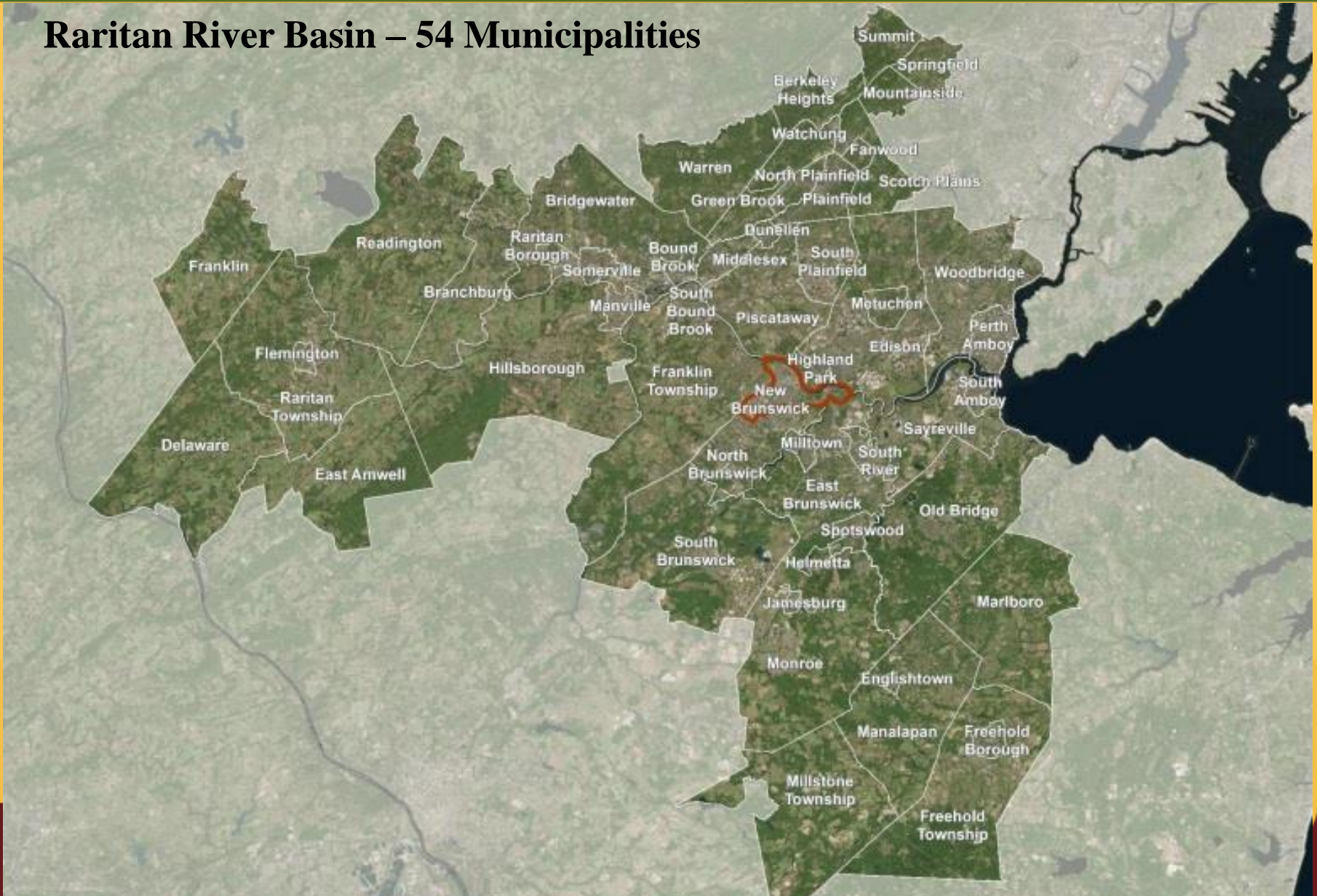


3 EDUCATIONAL PROGRAM



Green Infrastructure Assessment & Plan Spotlight

Raritan River Basin – 54 Municipalities



Green Infrastructure Installation Spotlight

Summer Elementary School, Camden, NJ

- In 2011, two fourth grade classes, participated in the Rutgers' Stormwater Management in Your School Yard educational program that was designed to provide students with an opportunity to apply their science, math, and communication skills to real-world environmental problems through the building of a rain garden on the Summer Elementary School's campus.

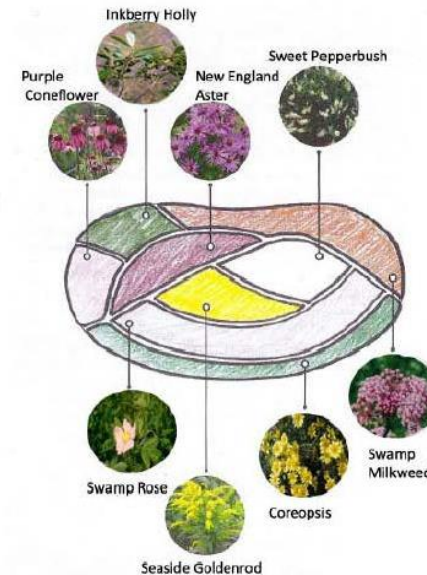


Summer Elementary School
1600 South 8th St
Camden, NJ

2010 Rain Garden Layout

Plant List

Purple Coneflower (*Echinacea purpurea*)
Inkberry Holly (*Ilex glabra*)
New England Aster (*Aster novae-angliae*)
Sweet Pepperbush (*Clethra alnifolia*)
Swamp Rose (*Rosa palustris*)
Seaside Goldenrod (*Solidago sempervirens*)
Coreopsis (*Coreopsis lanceolata*)
Swamp Milkweed (*Asclepias incarnata*)



Rain Garden Design

Rain Garden Drainage Area: 1800ft²
Rain Garden Size: 340ft²



Green Infrastructure Installation Spotlight

Summer Elementary School, Camden, NJ

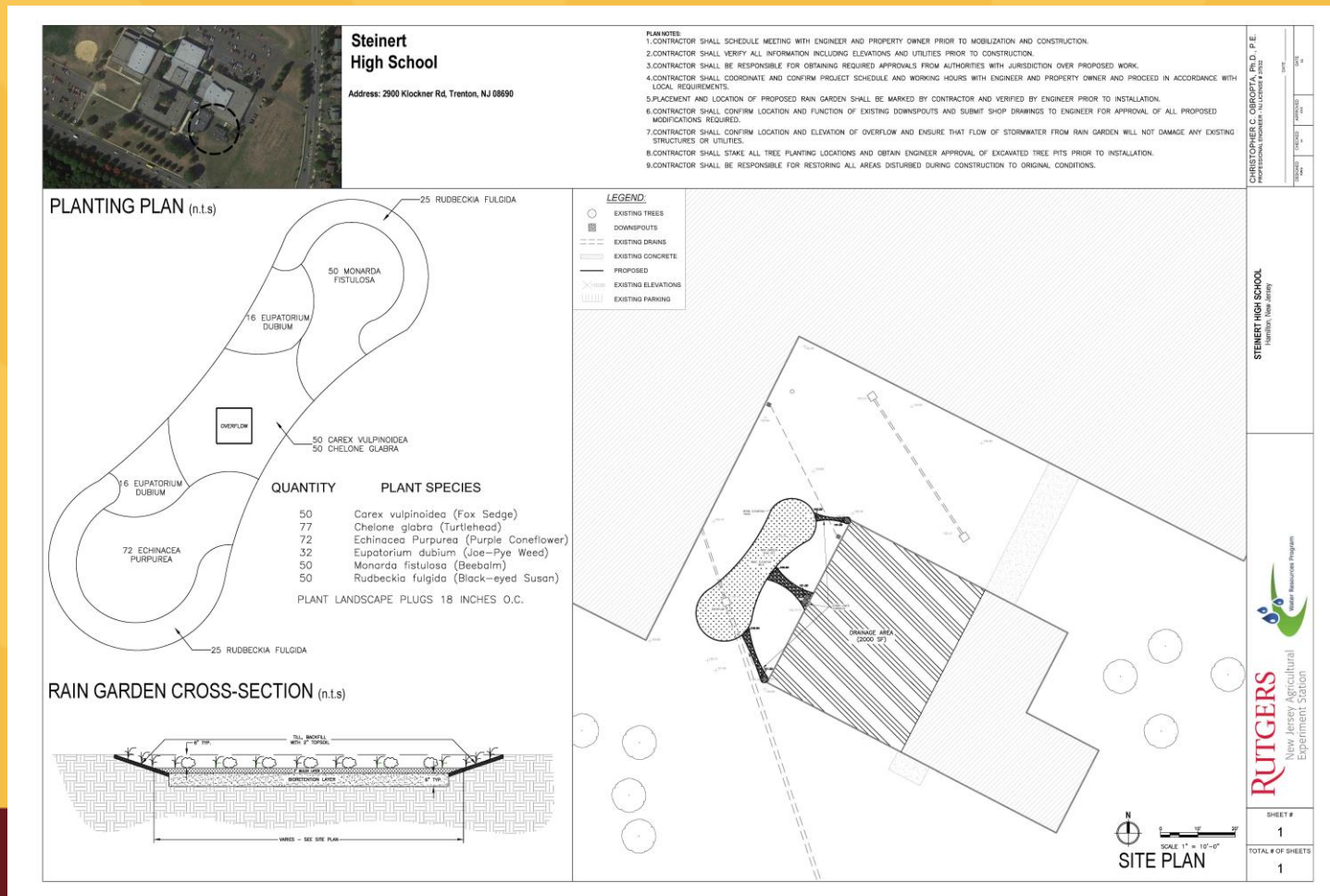
- The stormwater from the roof enters the rain gardens through redirected downspouts. These rain gardens help mitigate nuisance flooding in the area and help reduce nonpoint source pollution and stormwater that would otherwise discharge into the City of Camden's combined sewer system.
- Rain garden size - 340 square feet
- Drainage area - 1,800 square feet



Green Infrastructure Installation Spotlight

Steinert High School, Hamilton, NJ

- In 2013, staff from the Rutgers Cooperative Extension Water Resources Program conducted an educational program for the Steinert High School AP Biology class.



Green Infrastructure Installation Spotlight

Steinert High School, Hamilton, NJ

- This educational program included a discussion on what a watershed is, an overview of rain gardens using a virtual rain garden simulator, a lesson on soils, a demonstration about how to monitor their rain garden, and facts about the native plants that they helped to install in their school's rain garden. This rain garden manages stormwater runoff from a portion of the school building's roof via three redirected downspouts. To address the water quality issues associated with increased stormwater runoff, demonstration projects like this rain garden are essential.

- Rain garden size - 450 square feet
- Drainage area - 2,000 square feet



Sustainable Jersey Small Grant Awards

Sponsor	Deadline	Awards	Total Amount
PSEG	2/23/2015	34	\$100,000
DOH (Health)	6/26/2015	29	\$116,000
NJEA	10/4/2015	50	\$180,000
Gardinier (Energy)	11/1/2015	8	\$100,000
PSEG	1/24/16	34	\$100,000
Total		155	\$596,000

Has anyone here received a Sustainable Jersey grant?



Opportunities to Partner with the RCE Water Resources Program

- Berkeley Heights Township
- Bound Brook Boro
- Branchburg Township
- Bridgewater Township
- Delaware Township
- Dunellen Boro
- East Amwell Township
- East Brunswick Township
- Edison Township
- Englishtown Boro
- Fanwood Boro
- Flemington Boro
- Franklin Township
- Freehold Boro
- Freehold Township
- Green Brook Township
- Helmetta Boro
- Highland Park Boro
- Hillsborough Township
- Jamesburg Boro
- Manalapan Township
- Manville Boro
- Marlboro Township
- Metuchen Boro
- Middlesex Boro
- Millstone Township
- Milltown Boro
- Monroe Township
- Mountainside Boro
- New Brunswick City
- North Brunswick Township
- North Plainfield Boro
- Old Bridge Township
- Plainfield City
- Perth Amboy City
- Piscataway Township
- Raritan Township
- Readington Township
- Sayreville Boro
- Scotch Plains Township
- Somerville Boro
- South Amboy City
- South Bound Brook Boro
- South Brunswick Township
- South River Boro
- Springfield Township
- Summit City
- Raritan Boro
- Watchung Boro
- Warren Township
- Woodbridge Township

MORE COMING SOON!



2016 Certification Cycle

- January 15 – Initial Application Deadline
- Late February – Reviewer Comments
- April 8 – Second Application Submission
- Early May – Reviewer Comments
- June 24 – Final Application Submission
- Mid July – Certified Schools Notified
- October – Certified Schools Celebration



Sustainable Jersey for Schools Supporters

Underwritten By:



Sponsored By:

*Sustainable Jersey
for Schools Small
Grants Program
Underwriters*



Founding Sponsors



Silver Sponsor



Bronze Sponsor



For More Information

- Visit us at www.sustainablejerseyschools.com
- Email schools@sustainablejersey.com
- Call Sustainable Jersey Staff
 - Heather McCall 609-771-2469
 - Veronique Lambert 609-771-3427

