

Having trouble viewing this email? [Please click here](#)



## Water Pages eNewsletter

### [Green Infrastructure for the City of Camden]

Over the past four years, the Rutgers Cooperative Extensions (RCE) Water Resources Program has partnered with the Camden County Municipal Utilities Authority (CCMUA) to address stormwater management issues throughout the City of Camden. Through this partnership and the efforts of the Camden SMART (Stormwater Management and Resource Training) Initiative, over 30 green infrastructure projects have been constructed capturing over 3 million gallons of stormwater runoff each year!

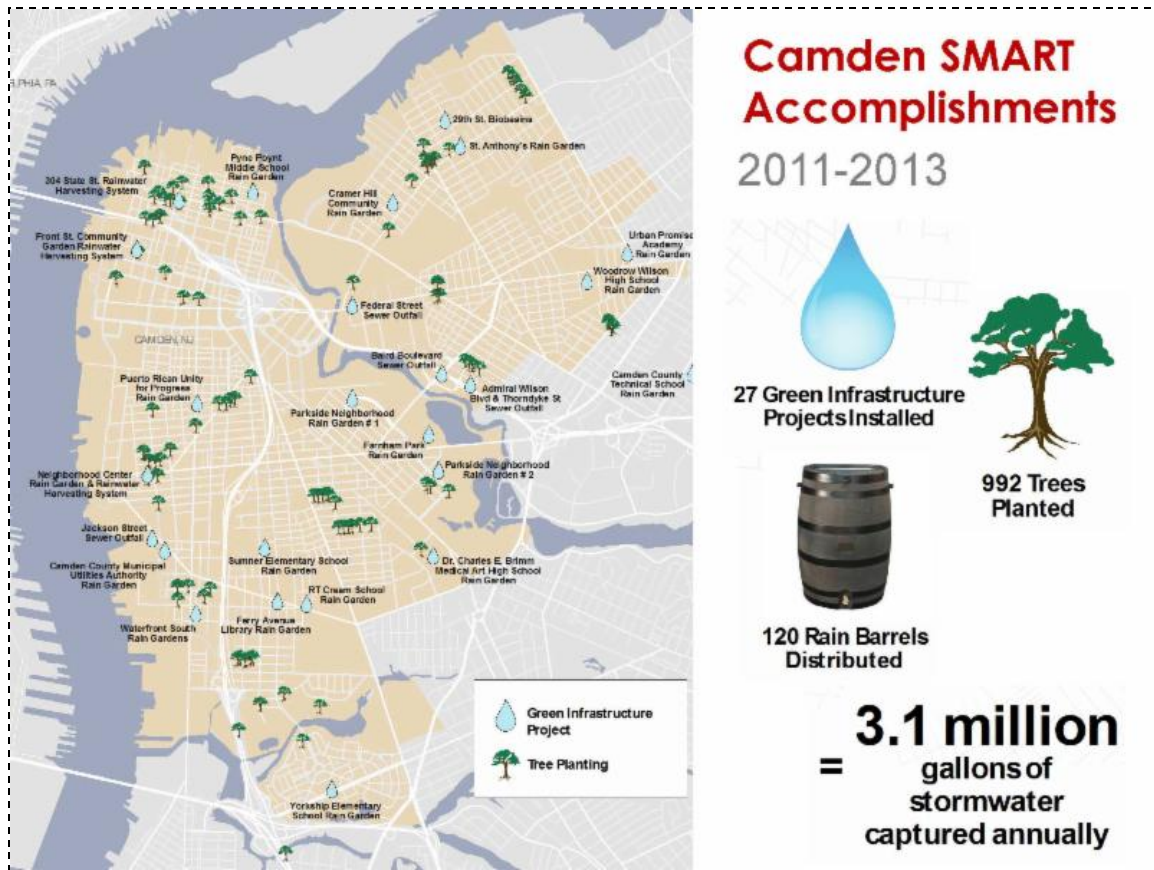


**Camden SMART  
2011-2013 Accomplishments**



Stay tuned for more great news this summer as we and all of our Camden SMART partners begin constructing an additional 20 green infrastructure projects with funding from the New Jersey Department of Environmental Protection (NJDEP)! These green infrastructure projects will include rain gardens, cisterns, stormwater planters, and permeable pavements. We are all very excited to continue our work to capture, filter, and infiltrate stormwater to reduce the frequency of combined sewer overflows protecting and improving New Jersey's waterways.

For more information about this project, please visit our website by clicking [here](#).



## [Stormwater Mitigation Plan for Hamilton Township]



Over the past three years, the RCE Water Resources Program has partnered with Hamilton Township to address stormwater and flooding issues in town. These efforts have been integrated into a comprehensive stormwater mitigation plan for Hamilton. A municipality may grant a variance or exemption from the design and performance standards for stormwater management measures

only if the municipality has prepared and adopted a stormwater mitigation plan in accordance with the New Jersey Stormwater Management Rules.

By completing a mitigation plan, the RCE Water Resources Program identified suitable priority areas within the Township where stormwater management efforts are needed. When applications for development are unable to meet specific groundwater recharge, water quality, or water quantity requirements on their project site, the projects outlined in the stormwater mitigation plan provide options

for the applicants with the needed resource protection and stormwater management measures required. This is a significant opportunity for Hamilton Township to ensure that future development projects comply with the New Jersey Stormwater Management Rules and reduce their impacts on Township water resources.

For more information on this project visit our website by clicking [here](#).

## [Meet Our Interns]

The RCE Water Resources Program would like to welcome our summer interns to the team! From left to right pictured below, Chris, Eugene, Elliot, Dominick, Adam, Nicole, Kaylin, Hollie, Amna and Dillon. Our intern team consists of Bioenvironmental Engineering, Civil and Environmental Engineering, Physical Oceanography, Environmental Planning and Design, Landscape Architecture and Spanish backgrounds. We look forward to working with these bright students over the course of the summer and giving them opportunities to interact with our partners on various projects throughout the state of New Jersey.



**2014 Student Interns**

Don't forget to visit our website at: [water.rutgers.edu](http://water.rutgers.edu)

Like us on Facebook 

Follow us on  **twitter**

[Forward this email](#)

 SafeUnsubscribe™



*Try it FREE today.*

This email was sent to rdasilva@envsci.rutgers.edu by [rce.water.resources.program@gmail.com](mailto:rce.water.resources.program@gmail.com) | [Update Profile/Email Address](#) | Instant removal with [SafeUnsubscribe™](#) | [Privacy Policy](#).

Rutgers Cooperative Extension Water Resources Program | 14 College Farm Road | New Brunswick | NJ | 08901