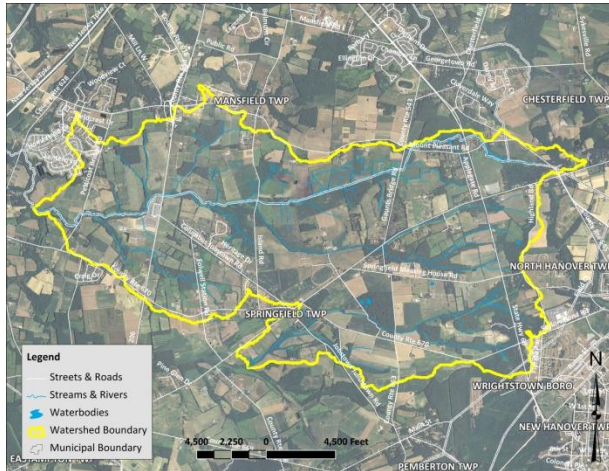


## WHO IS ELIGIBLE FOR FUNDING?

Eligible applicants for funding through the *Assiscunk Creek Watershed Agricultural Mini-Grant Program* are:

- Properties located within the Assiscunk Creek Watershed (see Target Area below)
- Land currently in agricultural usage, such as cropland, nursery operations, pasture, sod farms, and other agricultural land on which agricultural products, livestock or forest-related products are produced



Target area (in yellow) for the Assiscunk Creek Watershed Agricultural Mini-Grant Program

*Funding for this program is provided by the New Jersey Department of Environmental Protection through the 319(h) Grants for Nonpoint Source Pollution Control.*

## ABOUT THE PROGRAM

The *Assiscunk Creek Watershed Agricultural Mini-Grant Program* provides funding for producers to implement agricultural management practices (AMPs) that improve water quality in the Assiscunk Creek and its tributaries or to promote water conservation and efficiency.

The *Mini-Grant Program* provides funding to either complement United States Department of Agriculture Farm Bill programs (NRCS, FSA) or sole-source of funding for applicable AMPs.



The *Mini-Grant Program* will:

- Encourage the use of conservation practices which reduce the impact of agricultural nonpoint source pollution
- Provide cost-share assistance as an incentive to implement conservation practices
- Improve producer-based stewardship of land and water resources



Examples of conservation practices that can receive funding include:

- filter strips and stream buffers
- grassed waterways
- soil erosion prevention
- irrigation systems
- tailwater recovery
- cover crops
- nutrient management plans and actions
- pest management planning and implementation



## STEPS TO APPLY FOR A MINI-GRANT:

1. Contact one of the members of the project partnership (see contact information below) to discuss your project and for assistance in applying to the *Mini-Grant Program*.
2. Obtain a copy of the application from <http://water.rutgers.edu/> or by contacting the project coordinator (see contact information below).
3. Fill out the application and submit the completed application by email to [evrard@rci.rutgers.edu](mailto:evrard@rci.rutgers.edu) or mail a hardcopy to:

Assiscunk Creek Watershed  
Agricultural Mini-Grant Program  
ATTN: Lisa Galloway Evrard  
Rutgers Cooperative Extension  
Water Resources Program  
14 College Farm Road  
New Brunswick, NJ 08901-8551

If you have any questions, please contact any of the following:

- Bill Bamka:  
[bamka@njaes.rutgers.edu](mailto:bamka@njaes.rutgers.edu) or at  
(609) 265-5050
- Mike Haberland:  
[haberland@njaes.rutgers.edu](mailto:haberland@njaes.rutgers.edu) or at  
(609) 265-5050
- Lisa Galloway Evrard:  
[evrard@rci.rutgers.edu](mailto:evrard@rci.rutgers.edu) or at  
(848) 932-6726



## HOW WE CAN HELP?

If you would like more information about how to participate in the *Assiscunk Creek Watershed Agricultural Mini-Grant Program*, please contact:

### **Lisa Galloway Evrard**

Senior Program Coordinator  
Rutgers Cooperative Extension  
Water Resources Program  
(848) 932-6726

[evrard@rci.rutgers.edu](mailto:evrard@rci.rutgers.edu)  
<http://water.rutgers.edu>

### **Project Partners & Collaborators:**

Rutgers Cooperative Extension  
Water Resources Program

Rutgers Cooperative Extension of  
Burlington County

New Jersey Department of  
Environmental Protection



Christopher C. Obropta, Ph.D., P.E.  
Associate Extension Specialist  
(848) 932-5711  
[obropta@envsci.rutgers.edu](mailto:obropta@envsci.rutgers.edu)  
<http://water.rutgers.edu>

ASSISCUNK CREEK WATERSHED  
AGRICULTURAL MINI-GRANT PROGRAM