

## **Hamilton Township (Mercer County) Stormwater Catch Basin Assessment Summary 2024: Snow Zones C and D**

Developed by the Rutgers Cooperative Extension Water Resources Program  
Funded by Hamilton Township, Mercer County, New Jersey  
August 26, 2024

## Table of Contents

Introduction.....	1
Methods and Procedures.....	1
Summary of Key Findings.....	3
Recommendations.....	4
Attachment 1: Catch Basin Assessment Maps	
Attachment 2: Catch Basin Assessment Tables	

## Acknowledgements

The Hamilton Township (Mercer County) Stormwater Catch Basin Assessment has been produced by the **Rutgers Cooperative Extension (RCE) Water Resources Program**.

Funding for this project was generously provided by the **Township of Hamilton, Mercer County, New Jersey** and in part by the **New Jersey Agricultural Experiment Station** through the United States Department of Agriculture.

## **Introduction**

Hamilton Township, located in Mercer County, New Jersey, owns and operates about 7,524 stormwater catch basins that drain into waterways throughout the township. This is a summary of the catch basin inspection program conducted in 2024 by the Rutgers Cooperative Extension (RCE) Water Resources Program. The purpose of the program is to provide an assessment of existing conditions related to obstruction of flow within the catch basin box due to sediment or debris accumulation atop the grate as well as identifying catch basins in need of repair. This assessment evaluates the overall integrity of the catch basin structures by prioritizing maintenance for each catch basin in terms of cleaning, repairs, and overall needs.

All catch basins that are “owned and operated” by Hamilton Township per the municipal separate storm sewer system (MS4) permit from the New Jersey Department of Environmental Protection (NJDEP) are required to be inspected once every five years. Moving forward, one of five inspection zones will be inspected each year. The township had existing Snow Zones which were used to divide inspections each year as evenly as possible. Inspection Zone 2 includes the northwest portion of the township (Snow Zones C & D). The RCE Water Resources Program was responsible for inspecting Snow Zone C and the portion of Snow Zone D south of Miry Run over the summer of 2024, while the Hamilton Department of Public Works (DPW) was responsible for inspecting the portion of Snow Zone D north of Miry Run. The RCE Water Resources Program additionally inspected several catch basins north of Miry Run to meet the 1,000 catch basin inspections requirement.

All efforts for this project were for the purposes of inspecting catch basins to maintain their function to ensure proper drainage and to prevent clogging and flooding. The assessments were performed from June to July 2024 by the RCE Water Resources Program.

## **Methods and Procedures**

A multi-part approach was taken to assess catch basins that are owned or operated by Hamilton Township. A geographic information system (GIS) was used to visualize the location of mapped catch basin locations using existing data. Hamilton Township utilizes the web-based GIS application TRAIRS to manage their digital stormwater assets, so a digital inspection form

was created inside TRAIRS for ease of entry and to allow seamless collaboration between the RCE Water Resources Program and Hamilton Township. Inspection personnel created work orders for each catch basin that was inspected.

The software allowed staff to photograph and record data for each stormwater catch basin assessed. This collected data included information about the properties of the catch basin (e.g., depth, grate dimensions, box material, inlet diameters, etc.) as well as needs for maintenance or repair of catch basin structures. These collected data were processed and standardized as needed for consistency across the dataset. These data were analyzed and visualized using ArcGIS Pro.

A total of 1,037 catch basins were originally identified for assessment in 2024 in Snow Zones C and D. However, the actual total inspections conducted included catch basins outside the original target zone, bringing the total to 1,112 catch basins. This is out of 7,524 township-owned or operated stormwater catch basins, including catch basins in the right of way, on municipally owned property, and in stormwater related easements. Of the 1,112 catch basins that were to be inspected, 91 were already inspected by the DPW, 934 were successfully inspected, eight (8) were reported not to exist, 25 were reported to not to be catch basins, 17 were inaccessible due to being located on private property, and 9 were otherwise not found. An additional 28 points were determined to be duplicates that should be removed from the dataset. Attachment 2 summarizes the notes recorded during site inspections for the catch basins not found and/or inaccessible.

A prioritization scale was utilized to compare cleaning, repair, and overall priority. Higher overall priority was assigned to catch basins that exhibited significant signs of deterioration than to those that exhibited signs of obstructed flow that only impaired their capacity to handle stormwater inundation. All catch basins were placed on a scale from one (1) to five (5), with one (1) indicating no maintenance necessary and five (5) being the highest priority and needing immediate attention. Any catch basin assigned a priority level of three (3) or higher should be addressed for maintenance or for repair.

## Summary of Key Findings

The following conclusions were drawn after reviewing data for the 934 catch basins assessed. Table 1 summarizes these findings. Based on medium being the action level, 125 catch basins are in need of cleaning, and 135 are in need of repair. For overall priority, there are 167 catch basins that are in need of attention first.

*Table 1: Count of Zone C and D catch basins in each cleaning, repair, and overall priority tier*

	(1)-None	(2)-Low	(3)-Medium	(4)-High	(5)-Highest
Cleaning Priority	512	297	97	22	6
Repair Priority	650	149	100	34	1
Overall Priority	384	381	132	33	4

A series of maps is shown in Attachment 1 to show the spatial distribution of the priority criteria. A series of tables is provided in Attachment 2 to highlight each priority criterion as well as identify catch basins that could not be found or should be removed from the dataset. The full dataset with images of each catch basin can be viewed through the TRAISR application. The TRAISR dataset can be filtered and sorted with these criteria to navigate the data more easily than the static tables.

## **Recommendations**

Based on the assessment and summary of key findings, recommendations are as follows:

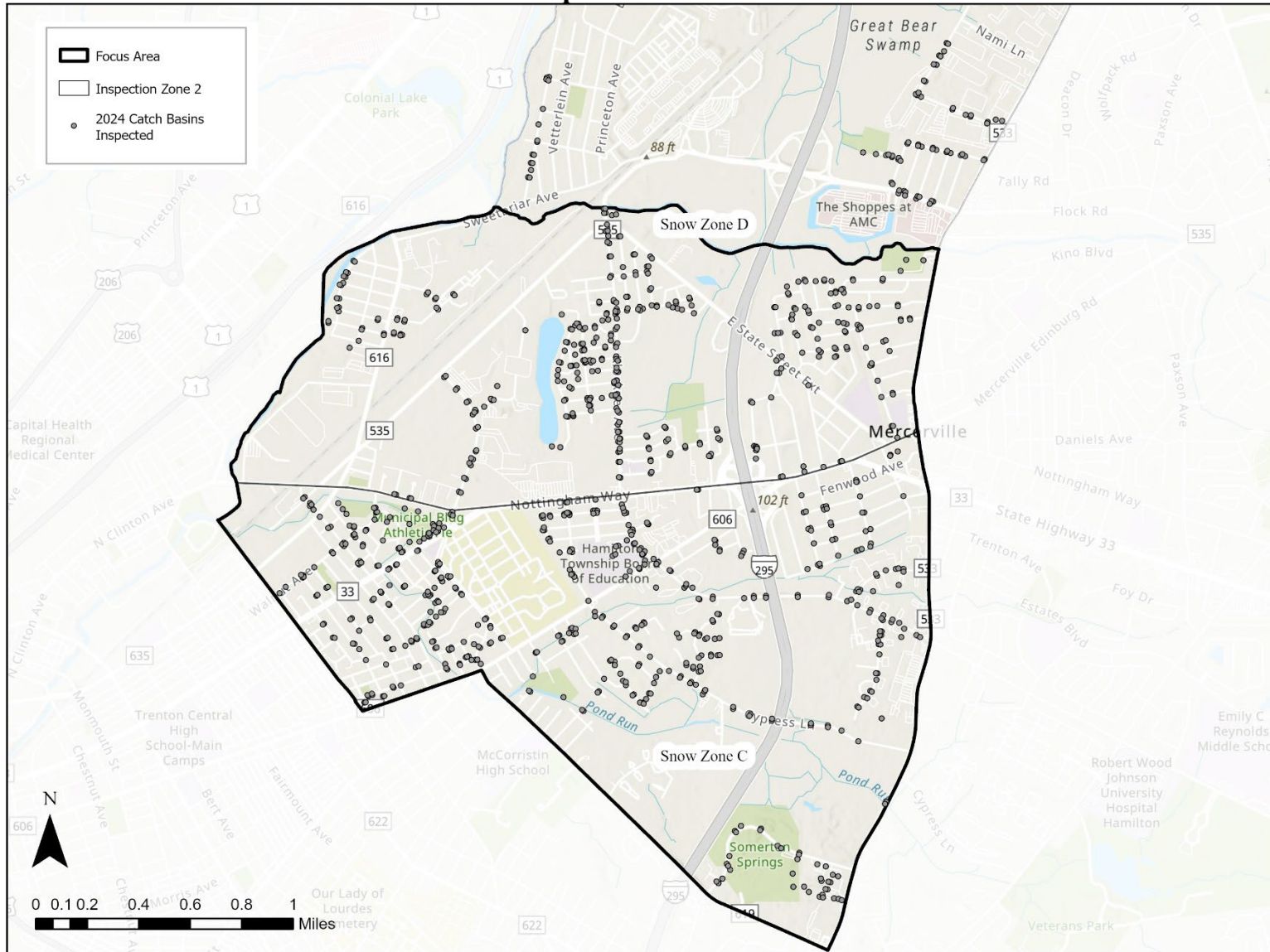
1. The four (4) catch basins identified as highest overall priority should be visited by Hamilton Township personnel, followed by the 33 high priority catch basins. A plan and schedule should be developed to take the necessary corrective actions as soon as possible.
2. A complete maintenance plan and schedule should be developed for all stormwater catch basins in Region 2 to address the deficiencies noted in this assessment in a timely manner starting with those with highest priority.
3. Each year, subsequent Regions should be inspected (Region 3 in 2025, Region 4 in 2026, etc.).

This assessment was not intended to be a complete and comprehensive inventory of all catch basins owned and operated by Hamilton Township. Efforts for this project focused solely on mapping and inventorying known municipally maintained catch basins located in Snow Zones C and D. The remaining inspections in Inspection Zone 2 should be completed by the DPW to fulfill the required assessments for this year.

**Attachment 1: Catch Basin Assessment Maps**



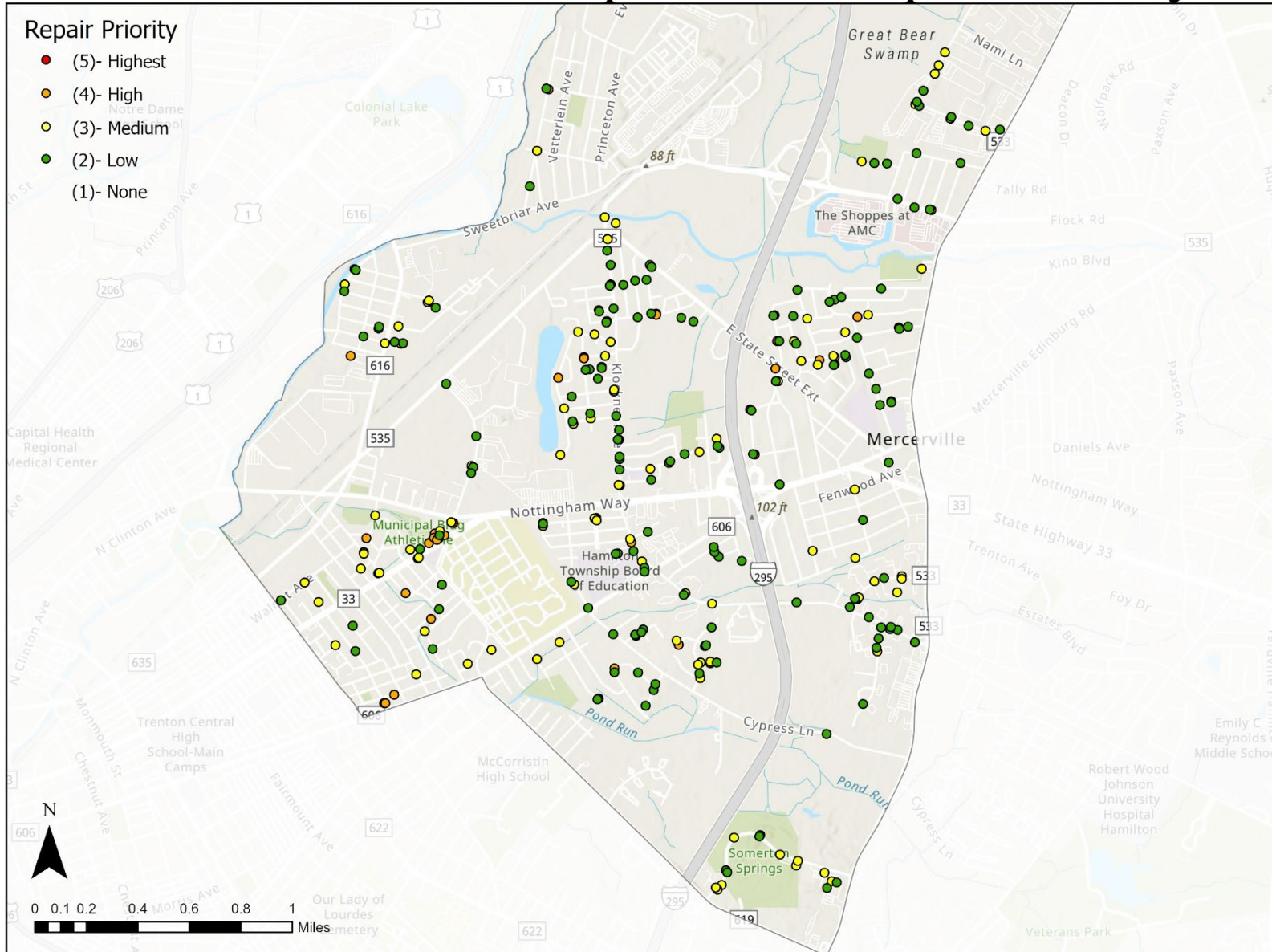
# Hamilton Catch Basin Inspection 2024: Snow Zones C & D





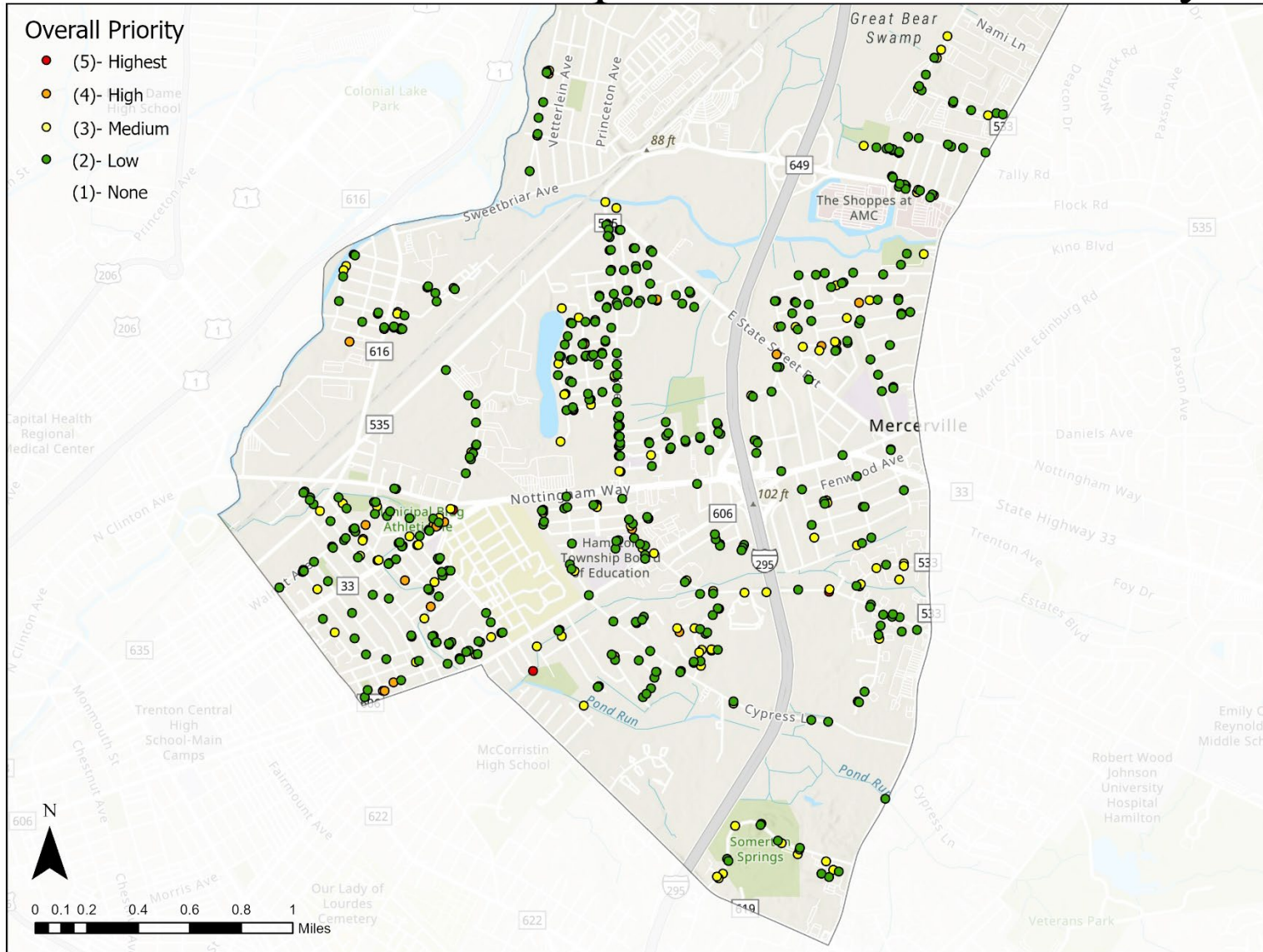


# 2024 Catch Basin Inspections: Repair Priority





# 2024 Catch Basin Inspections: Overall Priority



## Attachment 2: Catch Basin Assessment Tables

<b>General Color-Coding Key</b>
Severe Issues
Significant Issues
Moderate Issues
Minor Issues
No Problems
Not Inspected

### Inaccessible and Not Inspected Catch Basins

UID	Inspected?	Not Found/Not Inspected Notes
0	Not Found	Not found
2375	Inaccessible	Inaccessible, fenced off
3005	Inaccessible	Inaccessible, behind homes
3011	Inaccessible	Inaccessible, behind homes
4599	Inaccessible	Inaccessible, behind homes
5496	Not Found	Not found
5894	Not Found	Not found
5898	Inaccessible	Inaccessible, behind homes
5899	Inaccessible	Inaccessible, behind homes
5900	Inaccessible	Inaccessible, behind homes
5901	Inaccessible	Inaccessible, behind homes
5902	Not Found	Not found
5903	Inaccessible	Inaccessible, behind homes
5904	Inaccessible	Inaccessible, behind homes
5905	Not Found	Not found
5906	Inaccessible	Inaccessible, behind homes
5936	Inaccessible	Inaccessible, behind homes
7591	Inaccessible	Inaccessible, behind homes
12484	Inaccessible	Inaccessible, fenced inside private property
12485	Inaccessible	Inaccessible, fenced inside private property
13752	Not Found	Not found
13753	Not Found	Not found
13762	Not Found	Not found
14032	Inaccessible	Inaccessible
14067	Inaccessible	Inaccessible, behind homes
14116	Not Found	Not found

## Points to Remove from Dataset

UID	Inspected?	Notes
0	Remove	Duplicate, in Snow Zone C at the end of Libby Court
0	Remove	Duplicate, in Snow Zone C at the end of Libby Court
0	Remove	Duplicate, in Snow Zone C at the end of Libby Court
0	Remove	Duplicate, in Snow Zone C at the end of Libby Court
0	Remove	Duplicate, in Snow Zone C at the end of Libby Court
0	Remove	Duplicate, in Snow Zone C at the end of Libby Court
0	Remove	Duplicate, in Snow Zone C at the end of Libby Court
0	Remove	Duplicate, in Snow Zone C at the end of Libby Court
0	Remove	Duplicate, in Snow Zone C at the end of Libby Court
0	Remove	Duplicate, in Snow Zone C at the end of Libby Court
0	Remove	Duplicate, in Snow Zone C at the end of Libby Court
0	Remove	Duplicate, in Snow Zone C at the end of Libby Court
0	Remove	Duplicate, in Snow Zone C at the end of Libby Court
3017	Remove	does not exist
3078	Remove	not a catch basin
3096	Remove	not a catch basin
3420	Remove	Duplicate
4532	Remove	not a catch basin
4624	Remove	not a catch basin
5732	Remove	does not exist
5751	Remove	not a catch basin
5757	Remove	does not exist
5759	Remove	does not exist
5780	Remove	not a catch basin
6021	Remove	not a catch basin
7306	Remove	not a catch basin
7342	Remove	Duplicate
7356	Remove	Duplicate
7357	Remove	Duplicate
7358	Remove	Duplicate
7359	Remove	Duplicate
7393	Remove	does not exist
7533	Remove	not a catch basin
7580	Remove	Duplicate
7590	Remove	Duplicate
7755	Remove	Duplicate
7756	Remove	Duplicate
10250	Remove	does not exist
10292	Remove	Duplicate
10315	Remove	Duplicate
10361	Remove	not a catch basin
10370	Remove	not a catch basin
10394	Remove	Duplicate
10396	Remove	Duplicate
10404	Remove	does not exist
11147	Remove	Duplicate
12183	Remove	not a catch basin
12197	Remove	not a catch basin
12507	Remove	not a catch basin
12516	Remove	not a catch basin
12525	Remove	not a catch basin
12530	Remove	not a catch basin
13750	Remove	not a catch basin
13761	Remove	not a catch basin
13967	Remove	not a catch basin
13968	Remove	not a catch basin
13969	Remove	not a catch basin
13970	Remove	not a catch basin
13972	Remove	not a catch basin
13981	Remove	not a catch basin
14150	Remove	does not exist

## Catch Basin Priorities

UID	Cleaning Priority	Repair Priority	Overall Priority
0			
1	(2)- Low	(3)- Medium	(3)- Medium
2	(1)- None	(1)- None	(1)- None
3	(1)- None	(1)- None	(1)- None
7	(1)- None	(1)- None	(1)- None
8	(1)- None	(3)- Medium	(3)- Medium
10	(2)- Low	(1)- None	(2)- Low
11	(1)- None	(3)- Medium	(3)- Medium
29	(3)- Medium	(2)- Low	(2)- Low
30	(1)- None	(1)- None	(1)- None
1907	(2)- Low	(4)- High	(4)- High
2334	(1)- None	(1)- None	(1)- None
2335	(2)- Low	(1)- None	(2)- Low
2336	(3)- Medium	(4)- High	(4)- High
2337	(2)- Low	(4)- High	(4)- High
2338	(2)- Low	(2)- Low	(2)- Low
2339	(2)- Low	(1)- None	(2)- Low
2340	(3)- Medium	(4)- High	(4)- High
2350	(1)- None	(3)- Medium	(3)- Medium
2351	(1)- None	(1)- None	(1)- None
2354	(3)- Medium	(3)- Medium	(3)- Medium
2355	(1)- None	(1)- None	(1)- None
2356	(1)- None	(1)- None	(1)- None
2358	(3)- Medium	(4)- High	(4)- High
2359	(2)- Low	(3)- Medium	(3)- Medium
2360	(2)- Low	(3)- Medium	(3)- Medium
2364	(1)- None	(1)- None	(1)- None
2365	(1)- None	(1)- None	(1)- None
2367	(1)- None	(1)- None	(1)- None
2368	(1)- None	(1)- None	(1)- None
2371	(1)- None	(1)- None	(1)- None
2374	(3)- Medium	(1)- None	(2)- Low
2375			
2384	(1)- None	(1)- None	(1)- None
2427	(1)- None	(1)- None	(1)- None
2428	(2)- Low	(1)- None	(2)- Low
2430	(1)- None	(1)- None	(1)- None
2431	(2)- Low	(1)- None	(2)- Low
2435	(2)- Low	(3)- Medium	(3)- Medium
2437	(5)- Highest	(1)- None	(5)- Highest
2959	(1)- None	(1)- None	(1)- None
2960	(1)- None	(1)- None	(1)- None
2987	(1)- None	(1)- None	(1)- None
2988	(1)- None	(1)- None	(1)- None
2990	(3)- Medium	(3)- Medium	(3)- Medium
3000	(1)- None	(1)- None	(1)- None
3005			
3009	(2)- Low	(1)- None	(2)- Low
3011			
3012	(1)- None	(1)- None	(1)- None
3014	(1)- None	(1)- None	(1)- None
3015	(2)- Low	(1)- None	(2)- Low
3016	(1)- None	(1)- None	(1)- None
3017			



<b>UID</b>	<b>Cleaning Priority</b>	<b>Repair Priority</b>	<b>Overall Priority</b>
3018	(1)- None	(1)- None	(1)- None
3019	(2)- Low	(1)- None	(2)- Low
3020	(2)- Low	(4)- High	(4)- High
3021	(4)- High	(1)- None	(3)- Medium
3022	(1)- None	(1)- None	(1)- None
3023	(1)- None	(1)- None	(1)- None
3024	(2)- Low	(2)- Low	(2)- Low
3025	(3)- Medium	(1)- None	(2)- Low
3058	(2)- Low	(1)- None	(2)- Low
3059	(1)- None	(1)- None	(1)- None
3061	(1)- None	(1)- None	(1)- None
3063	(1)- None	(1)- None	(1)- None
3064	(3)- Medium	(1)- None	(2)- Low
3068	(2)- Low	(4)- High	(4)- High
3076	(2)- Low	(1)- None	(2)- Low
3077	(1)- None	(1)- None	(1)- None
3078			
3079	(2)- Low	(2)- Low	(2)- Low
3080	(1)- None	(1)- None	(1)- None
3081	(3)- Medium	(1)- None	(2)- Low
3083	(2)- Low	(3)- Medium	(3)- Medium
3084	(1)- None	(1)- None	(1)- None
3085	(1)- None	(1)- None	(1)- None
3086	(2)- Low	(2)- Low	(2)- Low
3087	(3)- Medium	(4)- High	(4)- High
3088	(1)- None	(1)- None	(1)- None
3089	(1)- None	(1)- None	(1)- None
3090	(1)- None	(1)- None	(1)- None
3091	(2)- Low	(2)- Low	(2)- Low
3095	(2)- Low	(3)- Medium	(3)- Medium
3096			
3097	(2)- Low	(3)- Medium	(3)- Medium
3098	(2)- Low	(5)- Highest	(5)- Highest
3103	(2)- Low	(1)- None	(2)- Low
3104	(2)- Low	(1)- None	(2)- Low
3105	(4)- High	(1)- None	(3)- Medium
3109	(3)- Medium	(1)- None	(3)- Medium
3110	(2)- Low	(1)- None	(2)- Low
3120	(1)- None	(1)- None	(1)- None
3121	(2)- Low	(4)- High	(4)- High
3122	(2)- Low	(1)- None	(2)- Low
3123	(3)- Medium	(1)- None	(3)- Medium
3124	(2)- Low	(1)- None	(2)- Low
3125	(1)- None	(1)- None	(1)- None
3126	(2)- Low	(4)- High	(4)- High
3127	(2)- Low	(3)- Medium	(3)- Medium
3128	(2)- Low	(1)- None	(2)- Low
3130	(1)- None	(1)- None	(1)- None
3133	(1)- None	(1)- None	(1)- None
3134	(2)- Low	(3)- Medium	(3)- Medium
3135	(2)- Low	(1)- None	(2)- Low
3136	(2)- Low	(1)- None	(2)- Low
3140	(1)- None	(2)- Low	(2)- Low
3141	(2)- Low	(2)- Low	(2)- Low
3142	(3)- Medium	(1)- None	(3)- Medium

<b>UID</b>	<b>Cleaning Priority</b>	<b>Repair Priority</b>	<b>Overall Priority</b>
3143	(1)- None	(1)- None	(1)- None
3144	(1)- None	(1)- None	(1)- None
3145	(1)- None	(2)- Low	(2)- Low
3146	(1)- None	(1)- None	(1)- None
3147	(1)- None	(1)- None	(1)- None
3148	(1)- None	(1)- None	(1)- None
3149	(1)- None	(1)- None	(1)- None
3150	(1)- None	(1)- None	(1)- None
3151	(1)- None	(1)- None	(2)- Low
3365	(3)- Medium	(4)- High	(4)- High
3400	(2)- Low	(2)- Low	(2)- Low
3401	(1)- None	(2)- Low	(2)- Low
3402	(2)- Low	(3)- Medium	(3)- Medium
3405	(1)- None	(1)- None	(1)- None
3406	(2)- Low	(2)- Low	(2)- Low
3408	(2)- Low	(1)- None	(2)- Low
3409	(1)- None	(1)- None	(1)- None
3418	(2)- Low	(4)- High	(4)- High
3419	(2)- Low	(4)- High	(4)- High
3421	(3)- Medium	(4)- High	(4)- High
3422	(1)- None	(1)- None	(1)- None
3423	(2)- Low	(1)- None	(2)- Low
3424	(2)- Low	(1)- None	(2)- Low
3425	(2)- Low	(1)- None	(2)- Low
3426	(2)- Low	(1)- None	(2)- Low
3427	(2)- Low	(1)- None	(2)- Low
3428	(2)- Low	(1)- None	(2)- Low
3431	(1)- None	(1)- None	(1)- None
3432	(2)- Low	(1)- None	(2)- Low
3433	(3)- Medium	(1)- None	(3)- Medium
3434	(1)- None	(3)- Medium	(3)- Medium
3435	(1)- None	(1)- None	(1)- None
3436	(1)- None	(1)- None	(1)- None
3437	(1)- None	(1)- None	(1)- None
3438	(2)- Low	(1)- None	(2)- Low
3439	(2)- Low	(2)- Low	(2)- Low
3440	(2)- Low	(1)- None	(2)- Low
3441	(1)- None	(1)- None	(1)- None
4072	(2)- Low	(1)- None	(2)- Low
4073	(5)- Highest	(2)- Low	(3)- Medium
4089	(1)- None	(1)- None	(1)- None
4090	(3)- Medium	(1)- None	(2)- Low
4091	(2)- Low	(1)- None	(2)- Low
4092	(2)- Low	(1)- None	(2)- Low
4094	(3)- Medium	(4)- High	(4)- High
4118	(3)- Medium	(1)- None	(2)- Low
4119	(4)- High	(1)- None	(3)- Medium
4120	(2)- Low	(1)- None	(2)- Low
4124	(1)- None	(1)- None	(1)- None
4125	(2)- Low	(1)- None	(2)- Low
4126	(2)- Low	(1)- None	(2)- Low
4127	(2)- Low	(1)- None	(2)- Low
4128	(1)- None	(1)- None	(1)- None
4129	(2)- Low	(1)- None	(2)- Low
4130	(3)- Medium	(3)- Medium	(3)- Medium

<b>UID</b>	<b>Cleaning Priority</b>	<b>Repair Priority</b>	<b>Overall Priority</b>
4131	(1)- None	(1)- None	(1)- None
4138	(2)- Low	(1)- None	(2)- Low
4153	(1)- None	(1)- None	(1)- None
4154	(2)- Low	(1)- None	(2)- Low
4155	(1)- None	(1)- None	(1)- None
4157	(1)- None	(1)- None	(1)- None
4159	(2)- Low	(1)- None	(2)- Low
4160	(2)- Low	(1)- None	(2)- Low
4161	(2)- Low	(3)- Medium	(3)- Medium
4162	(3)- Medium	(1)- None	(2)- Low
4163	(2)- Low	(1)- None	(2)- Low
4167	(1)- None	(3)- Medium	(3)- Medium
4223	(1)- None	(1)- None	(1)- None
4224	(2)- Low	(1)- None	(2)- Low
4225	(2)- Low	(1)- None	(2)- Low
4264	(1)- None	(1)- None	(1)- None
4267	(2)- Low	(2)- Low	(2)- Low
4268	(1)- None	(1)- None	(1)- None
4269	(1)- None	(1)- None	(1)- None
4271	(2)- Low	(1)- None	(2)- Low
4272	(1)- None	(1)- None	(1)- None
4273	(3)- Medium	(1)- None	(3)- Medium
4274	(1)- None	(1)- None	(1)- None
4275	(2)- Low	(1)- None	(2)- Low
4276	(2)- Low	(1)- None	(2)- Low
4279	(1)- None	(1)- None	(1)- None
4282	(2)- Low	(1)- None	(2)- Low
4313	(2)- Low	(1)- None	(1)- None
4314	(1)- None	(1)- None	(1)- None
4315	(2)- Low	(1)- None	(2)- Low
4322	(1)- None	(1)- None	(1)- None
4323	(1)- None	(1)- None	(1)- None
4324	(1)- None	(1)- None	(1)- None
4325	(1)- None	(1)- None	(1)- None
4326	(1)- None	(2)- Low	(2)- Low
4328	(3)- Medium	(4)- High	(4)- High
4330	(1)- None	(1)- None	(1)- None
4332	(1)- None	(1)- None	(1)- None
4333	(1)- None	(1)- None	(1)- None
4334	(2)- Low	(1)- None	(2)- Low
4335	(1)- None	(1)- None	(1)- None
4340	(3)- Medium	(1)- None	(2)- Low
4344	(1)- None	(3)- Medium	(3)- Medium
4345	(1)- None	(1)- None	(1)- None
4346	(2)- Low	(1)- None	(2)- Low
4347	(2)- Low	(1)- None	(2)- Low
4348	(2)- Low	(1)- None	(2)- Low
4349	(1)- None	(1)- None	(1)- None
4352	(1)- None	(1)- None	(1)- None
4353	(1)- None	(1)- None	(1)- None
4354	(1)- None	(1)- None	(1)- None
4355	(1)- None	(1)- None	(1)- None
4361	(1)- None	(1)- None	(1)- None
4362	(1)- None	(1)- None	(1)- None
4367	(2)- Low	(1)- None	(2)- Low

<b>UID</b>	<b>Cleaning Priority</b>	<b>Repair Priority</b>	<b>Overall Priority</b>
4368	(2)- Low	(1)- None	(2)- Low
4372	(2)- Low	(1)- None	(2)- Low
4373	(1)- None	(1)- None	(1)- None
4374	(3)- Medium	(3)- Medium	(3)- Medium
4375	(2)- Low	(1)- None	(2)- Low
4376	(2)- Low	(1)- None	(2)- Low
4377	(2)- Low	(1)- None	(2)- Low
4385	(2)- Low	(1)- None	(2)- Low
4388	(2)- Low	(1)- None	(2)- Low
4389	(3)- Medium	(1)- None	(2)- Low
4390	(3)- Medium	(1)- None	(3)- Medium
4391	(1)- None	(1)- None	(1)- None
4395	(2)- Low	(1)- None	(2)- Low
4396	(2)- Low	(1)- None	(2)- Low
4397	(1)- None	(1)- None	(1)- None
4398	(3)- Medium	(1)- None	(3)- Medium
4401	(2)- Low	(4)- High	(4)- High
4402	(1)- None	(1)- None	(1)- None
4403	(2)- Low	(1)- None	(2)- Low
4515	(1)- None	(1)- None	(1)- None
4516	(1)- None	(2)- Low	(2)- Low
4532			
4533	(1)- None	(1)- None	(1)- None
4534	(1)- None	(3)- Medium	(3)- Medium
4588	(1)- None	(1)- None	(1)- None
4589	(2)- Low	(1)- None	(2)- Low
4590	(2)- Low	(2)- Low	(2)- Low
4599			
4624			
4625	(1)- None	(1)- None	(1)- None
4626	(1)- None	(1)- None	(1)- None
4627	(3)- Medium	(3)- Medium	(3)- Medium
5002	(2)- Low	(1)- None	(2)- Low
5006	(1)- None	(3)- Medium	(3)- Medium
5039	(1)- None	(1)- None	(1)- None
5040	(1)- None	(1)- None	(1)- None
5042	(5)- Highest	(1)- None	(3)- Medium
5043	(2)- Low	(2)- Low	(2)- Low
5309	(1)- None	(1)- None	(1)- None
5311	(1)- None	(1)- None	(1)- None
5312	(1)- None	(1)- None	(1)- None
5320	(1)- None	(1)- None	(1)- None
5362	(1)- None	(1)- None	(1)- None
5363	(1)- None	(2)- Low	(2)- Low
5364	(3)- Medium	(1)- None	(3)- Medium
5492	(1)- None	(1)- None	(1)- None
5493	(1)- None	(1)- None	(1)- None
5496			
5498	(4)- High	(1)- None	(3)- Medium
5499	(1)- None	(1)- None	(1)- None
5501	(1)- None	(1)- None	(1)- None
5502	(1)- None	(1)- None	(1)- None
5503	(1)- None	(1)- None	(1)- None
5504	(1)- None	(1)- None	(1)- None
5723	(2)- Low	(2)- Low	(2)- Low

<b>UID</b>	<b>Cleaning Priority</b>	<b>Repair Priority</b>	<b>Overall Priority</b>
5724	(1)- None	(1)- None	(1)- None
5732			
5733	(1)- None	(1)- None	(1)- None
5735	(3)- Medium	(1)- None	(2)- Low
5736	(1)- None	(1)- None	(1)- None
5738	(5)- Highest	(1)- None	(5)- Highest
5739	(3)- Medium	(1)- None	(3)- Medium
5740	(1)- None	(1)- None	(1)- None
5751			
5756	(1)- None	(1)- None	(1)- None
5757			
5758	(1)- None	(2)- Low	(2)- Low
5759			
5760	(1)- None	(2)- Low	(2)- Low
5767	(1)- None	(1)- None	(1)- None
5768	(1)- None	(1)- None	(1)- None
5771	(1)- None	(1)- None	(1)- None
5772	(1)- None	(1)- None	(1)- None
5773	(1)- None	(3)- Medium	(2)- Low
5779	(1)- None	(1)- None	(1)- None
5780			
5781	(2)- Low	(3)- Medium	(3)- Medium
5782	(2)- Low	(1)- None	(2)- Low
5783	(1)- None	(1)- None	(1)- None
5784	(1)- None	(1)- None	(1)- None
5785	(1)- None	(1)- None	(1)- None
5788	(1)- None	(1)- None	(1)- None
5789	(1)- None	(2)- Low	(2)- Low
5790	(1)- None	(2)- Low	(2)- Low
5791	(2)- Low	(1)- None	(2)- Low
5792	(1)- None	(2)- Low	(2)- Low
5800	(2)- Low	(1)- None	(2)- Low
5801	(1)- None	(1)- None	(1)- None
5802	(1)- None	(2)- Low	(2)- Low
5803	(1)- None	(2)- Low	(2)- Low
5804	(2)- Low	(2)- Low	(2)- Low
5806	(1)- None	(1)- None	(1)- None
5811	(1)- None	(1)- None	(1)- None
5813	(2)- Low	(1)- None	(2)- Low
5814	(1)- None	(2)- Low	(2)- Low
5815	(3)- Medium	(1)- None	(3)- Medium
5816	(2)- Low	(1)- None	(2)- Low
5817	(1)- None	(1)- None	(1)- None
5818	(2)- Low	(1)- None	(2)- Low
5819	(2)- Low	(1)- None	(2)- Low
5820	(1)- None	(2)- Low	(2)- Low
5821	(1)- None	(4)- High	(4)- High
5822	(1)- None	(1)- None	(1)- None
5823	(2)- Low	(3)- Medium	(3)- Medium
5834	(2)- Low	(3)- Medium	(3)- Medium
5836	(1)- None	(1)- None	(1)- None
5837	(1)- None	(1)- None	(1)- None
5838	(1)- None	(1)- None	(1)- None
5839	(2)- Low	(1)- None	(2)- Low
5840	(2)- Low	(2)- Low	(2)- Low

<b>UID</b>	<b>Cleaning Priority</b>	<b>Repair Priority</b>	<b>Overall Priority</b>
5841	(2)- Low	(1)- None	(2)- Low
5842	(1)- None	(1)- None	(1)- None
5843	(3)- Medium	(1)- None	(2)- Low
5844	(1)- None	(1)- None	(1)- None
5845	(2)- Low	(3)- Medium	(3)- Medium
5846	(2)- Low	(1)- None	(2)- Low
5847	(2)- Low	(1)- None	(2)- Low
5866	(1)- None	(1)- None	(1)- None
5867	(1)- None	(1)- None	(1)- None
5868	(1)- None	(1)- None	(1)- None
5869	(2)- Low	(1)- None	(2)- Low
5870	(1)- None	(1)- None	(1)- None
5871	(1)- None	(1)- None	(1)- None
5872	(1)- None	(1)- None	(1)- None
5894			
5895	(1)- None	(1)- None	(1)- None
5896	(2)- Low	(2)- Low	(2)- Low
5897	(1)- None	(1)- None	(1)- None
5898			
5899			
5900			
5901			
5902			
5903			
5904			
5905			
5906			
5907	(3)- Medium	(3)- Medium	(3)- Medium
5908	(1)- None	(1)- None	(1)- None
5909	(1)- None	(1)- None	(1)- None
5910	(2)- Low	(1)- None	(2)- Low
5911	(3)- Medium	(3)- Medium	(3)- Medium
5912	(3)- Medium	(1)- None	(3)- Medium
5913	(2)- Low	(3)- Medium	(3)- Medium
5915	(5)- Highest	(3)- Medium	(4)- High
5916	(4)- High	(1)- None	(3)- Medium
5917	(2)- Low	(1)- None	(2)- Low
5918	(1)- None	(1)- None	(1)- None
5919	(3)- Medium	(1)- None	(2)- Low
5935	(2)- Low	(1)- None	(2)- Low
5936			
5937	(2)- Low	(3)- Medium	(3)- Medium
5940	(1)- None	(1)- None	(1)- None
5941	(2)- Low	(2)- Low	(2)- Low
5942	(1)- None	(1)- None	(1)- None
5943	(1)- None	(2)- Low	(2)- Low
5944	(2)- Low	(1)- None	(2)- Low
5945	(2)- Low	(1)- None	(2)- Low
5946	(1)- None	(1)- None	(1)- None
5947	(2)- Low	(1)- None	(2)- Low
5948	(3)- Medium	(4)- High	(4)- High
5949	(1)- None	(4)- High	(4)- High
5950	(1)- None	(2)- Low	(2)- Low
5951	(2)- Low	(1)- None	(2)- Low
5952	(1)- None	(1)- None	(1)- None

UID	Cleaning Priority	Repair Priority	Overall Priority
5953	(2)- Low	(1)- None	(2)- Low
5954	(1)- None	(1)- None	(1)- None
5955	(2)- Low	(3)- Medium	(3)- Medium
5956	(2)- Low	(2)- Low	(2)- Low
5958	(1)- None	(1)- None	(1)- None
5959	(4)- High	(4)- High	(5)- Highest
5960	(2)- Low	(2)- Low	(2)- Low
5968	(2)- Low	(1)- None	(2)- Low
5969	(2)- Low	(1)- None	(2)- Low
5970	(3)- Medium	(1)- None	(2)- Low
5971	(2)- Low	(1)- None	(2)- Low
5973	(2)- Low	(1)- None	(2)- Low
5979	(1)- None	(1)- None	(1)- None
5980	(2)- Low	(1)- None	(2)- Low
5986	(1)- None	(1)- None	(1)- None
5987	(1)- None	(2)- Low	(2)- Low
5988	(2)- Low	(1)- None	(1)- None
5989	(1)- None	(1)- None	(1)- None
5990	(1)- None	(1)- None	(1)- None
5995	(1)- None	(1)- None	(1)- None
5996	(1)- None	(1)- None	(1)- None
6001	(1)- None	(1)- None	(1)- None
6002	(3)- Medium	(1)- None	(2)- Low
6003	(3)- Medium	(1)- None	(2)- Low
6004	(1)- None	(1)- None	(1)- None
6005	(1)- None	(2)- Low	(2)- Low
6007	(1)- None	(1)- None	(1)- None
6010	(1)- None	(1)- None	(1)- None
6011	(1)- None	(4)- High	(4)- High
6012	(2)- Low	(2)- Low	(2)- Low
6017	(1)- None	(1)- None	(1)- None
6018	(2)- Low	(1)- None	(2)- Low
6019	(1)- None	(1)- None	(1)- None
6020	(1)- None	(1)- None	(1)- None
6021			
6026	(2)- Low	(1)- None	(2)- Low
6027	(1)- None	(1)- None	(1)- None
6032	(1)- None	(1)- None	(1)- None
6033	(1)- None	(1)- None	(1)- None
6035	(1)- None	(1)- None	(2)- Low
6036	(2)- Low	(2)- Low	(2)- Low
6747	(1)- None	(1)- None	(1)- None
6748	(4)- High	(2)- Low	(3)- Medium
6749	(1)- None	(1)- None	(1)- None
6750	(2)- Low	(2)- Low	(2)- Low
6751	(1)- None	(1)- None	(1)- None
6752	(1)- None	(2)- Low	(2)- Low
6753	(1)- None	(1)- None	(1)- None
6873	(1)- None	(2)- Low	(2)- Low
6874	(2)- Low	(1)- None	(2)- Low
6875	(1)- None	(1)- None	(1)- None
6876	(1)- None	(1)- None	(1)- None
6890	(1)- None	(2)- Low	(2)- Low
6954	(3)- Medium	(1)- None	(2)- Low
6959	(3)- Medium	(2)- Low	(2)- Low



<b>UID</b>	<b>Cleaning Priority</b>	<b>Repair Priority</b>	<b>Overall Priority</b>
6960	(4)- High	(1)- None	(2)- Low
6961	(4)- High	(1)- None	(3)- Medium
7056	(2)- Low	(2)- Low	(2)- Low
7059	(2)- Low	(1)- None	(2)- Low
7292	(1)- None	(3)- Medium	(3)- Medium
7294	(1)- None	(2)- Low	(2)- Low
7295	(1)- None	(1)- None	(1)- None
7296	(1)- None	(1)- None	(1)- None
7297	(2)- Low	(1)- None	(2)- Low
7306			
7309	(1)- None	(1)- None	(1)- None
7310	(1)- None	(1)- None	(1)- None
7311	(4)- High	(4)- High	(4)- High
7312	(1)- None	(2)- Low	(2)- Low
7313	(1)- None	(1)- None	(1)- None
7314	(1)- None	(1)- None	(2)- Low
7317	(2)- Low	(1)- None	(2)- Low
7318	(2)- Low	(1)- None	(2)- Low
7319	(1)- None	(2)- Low	(2)- Low
7320	(1)- None	(1)- None	(1)- None
7321	(1)- None	(3)- Medium	(3)- Medium
7322	(1)- None	(1)- None	(1)- None
7323	(1)- None	(1)- None	(1)- None
7324	(1)- None	(1)- None	(1)- None
7327	(2)- Low	(1)- None	(2)- Low
7328	(2)- Low	(1)- None	(2)- Low
7329	(1)- None	(4)- High	(4)- High
7330	(1)- None	(3)- Medium	(3)- Medium
7331	(1)- None	(3)- Medium	(3)- Medium
7332	(1)- None	(2)- Low	(2)- Low
7333	(2)- Low	(1)- None	(2)- Low
7334	(1)- None	(1)- None	(1)- None
7335	(1)- None	(1)- None	(1)- None
7336	(2)- Low	(3)- Medium	(3)- Medium
7337	(1)- None	(1)- None	(1)- None
7338	(1)- None	(1)- None	(1)- None
7339	(1)- None	(1)- None	(1)- None
7340	(2)- Low	(1)- None	(2)- Low
7341	(2)- Low	(2)- Low	(2)- Low
7343	(2)- Low	(2)- Low	(2)- Low
7344	(2)- Low	(1)- None	(2)- Low
7345	(1)- None	(1)- None	(1)- None
7346	(1)- None	(1)- None	(1)- None
7347	(2)- Low	(1)- None	(2)- Low
7348	(2)- Low	(1)- None	(2)- Low
7349	(1)- None	(1)- None	(1)- None
7350	(3)- Medium	(1)- None	(3)- Medium
7351	(1)- None	(1)- None	(1)- None
7352	(3)- Medium	(1)- None	(3)- Medium
7353	(2)- Low	(1)- None	(2)- Low
7354	(2)- Low	(1)- None	(2)- Low
7355	(1)- None	(1)- None	(1)- None
7360	(1)- None	(1)- None	(1)- None
7361	(2)- Low	(1)- None	(2)- Low
7362	(3)- Medium	(1)- None	(3)- Medium

<b>UID</b>	<b>Cleaning Priority</b>	<b>Repair Priority</b>	<b>Overall Priority</b>
7363	(1)- None	(1)- None	(1)- None
7364	(2)- Low	(1)- None	(2)- Low
7365	(1)- None	(1)- None	(1)- None
7366	(2)- Low	(1)- None	(2)- Low
7367	(1)- None	(2)- Low	(2)- Low
7368	(1)- None	(3)- Medium	(3)- Medium
7369	(2)- Low	(2)- Low	(2)- Low
7370	(1)- None	(1)- None	(1)- None
7371	(1)- None	(1)- None	(1)- None
7372	(1)- None	(3)- Medium	(3)- Medium
7373	(1)- None	(2)- Low	(2)- Low
7374	(1)- None	(2)- Low	(2)- Low
7375	(1)- None	(1)- None	(1)- None
7378	(1)- None	(1)- None	(1)- None
7379	(1)- None	(2)- Low	(2)- Low
7382	(1)- None	(2)- Low	(2)- Low
7383	(1)- None	(1)- None	(1)- None
7386	(1)- None	(3)- Medium	(3)- Medium
7387	(1)- None	(1)- None	(1)- None
7389	(1)- None	(1)- None	(1)- None
7390	(1)- None	(1)- None	(1)- None
7391	(1)- None	(1)- None	(1)- None
7392	(1)- None	(1)- None	(1)- None
7393			
7394	(2)- Low	(1)- None	(2)- Low
7395	(1)- None	(1)- None	(1)- None
7396	(1)- None	(1)- None	(1)- None
7397	(1)- None	(1)- None	(1)- None
7398	(2)- Low	(2)- Low	(2)- Low
7400	(1)- None	(4)- High	(4)- High
7401	(2)- Low	(1)- None	(2)- Low
7533			
7579	(1)- None	(1)- None	(1)- None
7581	(1)- None	(1)- None	(1)- None
7582	(1)- None	(4)- High	(3)- Medium
7583	(3)- Medium	(1)- None	(2)- Low
7584	(2)- Low	(1)- None	(2)- Low
7585	(3)- Medium	(1)- None	(3)- Medium
7586	(3)- Medium	(1)- None	(2)- Low
7590	(2)- Low	(2)- Low	(2)- Low
7591			
7592	(2)- Low	(1)- None	(2)- Low
7593	(1)- None	(1)- None	(1)- None
7594	(2)- Low	(1)- None	(2)- Low
7598	(2)- Low	(1)- None	(2)- Low
7599	(1)- None	(1)- None	(1)- None
7600	(1)- None	(1)- None	(1)- None
7601	(1)- None	(1)- None	(1)- None
7602	(2)- Low	(1)- None	(2)- Low
7603	(1)- None	(1)- None	(1)- None
7604	(3)- Medium	(4)- High	(3)- Medium
7612	(1)- None	(1)- None	(1)- None
7613	(1)- None	(3)- Medium	(3)- Medium
7614	(2)- Low	(2)- Low	(2)- Low
7621	(1)- None	(1)- None	(1)- None

<b>UID</b>	<b>Cleaning Priority</b>	<b>Repair Priority</b>	<b>Overall Priority</b>
7625	(1)- None	(1)- None	(1)- None
7628	(3)- Medium	(3)- Medium	(3)- Medium
7632	(1)- None	(1)- None	(1)- None
7633	(1)- None	(1)- None	(1)- None
7634	(1)- None	(1)- None	(1)- None
7635	(1)- None	(1)- None	(1)- None
7642	(4)- High	(3)- Medium	(3)- Medium
7643	(1)- None	(1)- None	(1)- None
7644	(1)- None	(1)- None	(1)- None
7645	(1)- None	(1)- None	(1)- None
7650	(2)- Low	(1)- None	(2)- Low
7651	(2)- Low	(1)- None	(2)- Low
7653	(1)- None	(1)- None	(1)- None
7654	(1)- None	(1)- None	(1)- None
7655	(2)- Low	(3)- Medium	(3)- Medium
7658	(2)- Low	(1)- None	(2)- Low
7659	(1)- None	(1)- None	(1)- None
7662	(2)- Low	(2)- Low	(2)- Low
7663	(1)- None	(2)- Low	(2)- Low
7664	(1)- None	(1)- None	(1)- None
7665	(1)- None	(1)- None	(1)- None
7671	(1)- None	(1)- None	(1)- None
7672	(1)- None	(1)- None	(1)- None
7673	(1)- None	(1)- None	(1)- None
7674	(1)- None	(1)- None	(1)- None
7675	(1)- None	(2)- Low	(2)- Low
7684	(2)- Low	(2)- Low	(2)- Low
7685	(1)- None	(1)- None	(1)- None
7687	(2)- Low	(1)- None	(2)- Low
7689	(3)- Medium	(1)- None	(2)- Low
7690	(2)- Low	(1)- None	(2)- Low
7691	(2)- Low	(3)- Medium	(3)- Medium
7692	(3)- Medium	(3)- Medium	(4)- High
7693	(1)- None	(2)- Low	(2)- Low
7694	(1)- None	(1)- None	(1)- None
7695	(2)- Low	(2)- Low	(2)- Low
7696	(4)- High	(1)- None	(3)- Medium
7697	(2)- Low	(2)- Low	(2)- Low
7698	(2)- Low	(1)- None	(2)- Low
7699	(1)- None	(1)- None	(1)- None
7700	(1)- None	(1)- None	(1)- None
7701	(1)- None	(1)- None	(1)- None
7702	(1)- None	(1)- None	(1)- None
7704	(2)- Low	(1)- None	(2)- Low
7705	(1)- None	(1)- None	(1)- None
7707	(2)- Low	(1)- None	(2)- Low
7715	(1)- None	(2)- Low	(2)- Low
7716	(1)- None	(2)- Low	(2)- Low
7728	(3)- Medium	(2)- Low	(2)- Low
7729	(1)- None	(1)- None	(1)- None
7734	(1)- None	(1)- None	(1)- None
7743	(2)- Low	(1)- None	(2)- Low
7744	(3)- Medium	(1)- None	(2)- Low
7747	(2)- Low	(2)- Low	(2)- Low
7750	(2)- Low	(3)- Medium	(3)- Medium

<b>UID</b>	<b>Cleaning Priority</b>	<b>Repair Priority</b>	<b>Overall Priority</b>
7751	(1)- None	(1)- None	(1)- None
7752	(1)- None	(1)- None	(1)- None
7753	(1)- None	(1)- None	(1)- None
7754	(2)- Low	(1)- None	(2)- Low
7755	(1)- None	(1)- None	(1)- None
7757	(2)- Low	(1)- None	(2)- Low
7766	(1)- None	(1)- None	(1)- None
7767	(1)- None	(2)- Low	(2)- Low
7768	(1)- None	(1)- None	(1)- None
7769	(1)- None	(1)- None	(1)- None
7775	(1)- None	(1)- None	(1)- None
7776	(3)- Medium	(1)- None	(3)- Medium
7777	(2)- Low	(1)- None	(2)- Low
7778	(1)- None	(3)- Medium	(2)- Low
7779	(1)- None	(1)- None	(1)- None
7780	(2)- Low	(3)- Medium	(3)- Medium
7792	(1)- None	(1)- None	(1)- None
7793	(1)- None	(1)- None	(1)- None
7794	(1)- None	(2)- Low	(2)- Low
7796	(2)- Low	(1)- None	(2)- Low
7797	(3)- Medium	(1)- None	(2)- Low
7798	(1)- None	(1)- None	(1)- None
7799	(1)- None	(1)- None	(1)- None
7800	(2)- Low	(2)- Low	(2)- Low
7801	(2)- Low	(2)- Low	(2)- Low
7802	(1)- None	(1)- None	(1)- None
7803	(1)- None	(2)- Low	(2)- Low
7804	(2)- Low	(2)- Low	(2)- Low
7805	(1)- None	(2)- Low	(2)- Low
7806	(1)- None	(2)- Low	(2)- Low
7809	(2)- Low	(1)- None	(2)- Low
7816	(3)- Medium	(3)- Medium	(3)- Medium
7817	(1)- None	(1)- None	(1)- None
7818	(3)- Medium	(1)- None	(2)- Low
7819	(2)- Low	(3)- Medium	(3)- Medium
7820	(1)- None	(1)- None	(1)- None
7821	(1)- None	(1)- None	(1)- None
7826	(1)- None	(1)- None	(1)- None
10079	(1)- None	(1)- None	(1)- None
10081	(1)- None	(1)- None	(1)- None
10084	(1)- None	(1)- None	(1)- None
10091	(1)- None	(1)- None	(1)- None
10094	(1)- None	(3)- Medium	(3)- Medium
10098	(3)- Medium	(1)- None	(2)- Low
10099	(1)- None	(1)- None	(1)- None
10105	(1)- None	(1)- None	(1)- None
10116	(1)- None	(1)- None	(1)- None
10126	(1)- None	(1)- None	(1)- None
10127	(1)- None	(2)- Low	(2)- Low
10129	(1)- None	(2)- Low	(2)- Low
10131	(1)- None	(1)- None	(1)- None
10138	(2)- Low	(2)- Low	(2)- Low
10139	(2)- Low	(2)- Low	(2)- Low
10141	(1)- None	(1)- None	(1)- None
10142	(1)- None	(1)- None	(1)- None

<b>UID</b>	<b>Cleaning Priority</b>	<b>Repair Priority</b>	<b>Overall Priority</b>
10145	(1)- None	(2)- Low	(2)- Low
10146	(1)- None	(1)- None	(1)- None
10147	(1)- None	(1)- None	(1)- None
10148	(1)- None	(1)- None	(1)- None
10149	(4)- High	(1)- None	(3)- Medium
10150	(1)- None	(2)- Low	(2)- Low
10156	(1)- None	(3)- Medium	(3)- Medium
10176	(1)- None	(1)- None	(1)- None
10177	(1)- None	(2)- Low	(2)- Low
10183	(1)- None	(1)- None	(1)- None
10184	(1)- None	(1)- None	(1)- None
10186	(1)- None	(2)- Low	(2)- Low
10188	(2)- Low	(1)- None	(1)- None
10189	(1)- None	(1)- None	(1)- None
10190	(2)- Low	(1)- None	(2)- Low
10192	(1)- None	(1)- None	(1)- None
10193	(1)- None	(3)- Medium	(3)- Medium
10194	(1)- None	(3)- Medium	(3)- Medium
10195	(1)- None	(1)- None	(1)- None
10196	(1)- None	(1)- None	(1)- None
10197	(1)- None	(2)- Low	(2)- Low
10199	(4)- High	(1)- None	(3)- Medium
10209	(1)- None	(1)- None	(1)- None
10211	(1)- None	(3)- Medium	(3)- Medium
10218	(1)- None	(1)- None	(1)- None
10220	(1)- None	(2)- Low	(1)- None
10221	(2)- Low	(1)- None	(2)- Low
10222	(4)- High	(1)- None	(3)- Medium
10223	(2)- Low	(1)- None	(2)- Low
10224	(2)- Low	(1)- None	(2)- Low
10225	(3)- Medium	(1)- None	(2)- Low
10226	(3)- Medium	(1)- None	(3)- Medium
10230	(1)- None	(2)- Low	(2)- Low
10231	(1)- None	(1)- None	(1)- None
10233	(2)- Low	(1)- None	(2)- Low
10237	(1)- None	(3)- Medium	(3)- Medium
10238	(1)- None	(1)- None	(1)- None
10239	(1)- None	(2)- Low	(2)- Low
10240	(3)- Medium	(1)- None	(3)- Medium
10248	(3)- Medium	(1)- None	(3)- Medium
10250			
10251	(3)- Medium	(1)- None	(2)- Low
10252	(1)- None	(1)- None	(1)- None
10253	(1)- None	(1)- None	(1)- None
10254	(2)- Low	(4)- High	(4)- High
10255	(1)- None	(3)- Medium	(3)- Medium
10259	(1)- None	(1)- None	(2)- Low
10260	(1)- None	(1)- None	(1)- None
10266	(1)- None	(2)- Low	(2)- Low
10269	(1)- None	(3)- Medium	(2)- Low
10270	(1)- None	(2)- Low	(2)- Low
10272	(1)- None	(3)- Medium	(3)- Medium
10273	(1)- None	(1)- None	(1)- None
10275	(2)- Low	(1)- None	(2)- Low
10276	(2)- Low	(1)- None	(2)- Low

<b>UID</b>	<b>Cleaning Priority</b>	<b>Repair Priority</b>	<b>Overall Priority</b>
10280	(1)- None	(1)- None	(1)- None
10289	(1)- None	(2)- Low	(2)- Low
10290	(1)- None	(3)- Medium	(3)- Medium
10291	(2)- Low	(1)- None	(2)- Low
10293	(1)- None	(1)- None	(1)- None
10294	(1)- None	(1)- None	(1)- None
10295	(1)- None	(1)- None	(1)- None
10296	(1)- None	(1)- None	(1)- None
10297	(1)- None	(1)- None	(1)- None
10298	(2)- Low	(1)- None	(2)- Low
10299	(1)- None	(1)- None	(1)- None
10300	(1)- None	(3)- Medium	(3)- Medium
10301	(1)- None	(1)- None	(1)- None
10302	(2)- Low	(2)- Low	(2)- Low
10303	(2)- Low	(3)- Medium	(3)- Medium
10308	(2)- Low	(3)- Medium	(3)- Medium
10309	(1)- None	(1)- None	(1)- None
10310	(1)- None	(4)- High	(4)- High
10311	(1)- None	(2)- Low	(2)- Low
10312	(1)- None	(1)- None	(1)- None
10313	(1)- None	(1)- None	(1)- None
10316	(1)- None	(3)- Medium	(3)- Medium
10317	(1)- None	(1)- None	(1)- None
10318	(1)- None	(1)- None	(1)- None
10319	(1)- None	(3)- Medium	(2)- Low
10320	(1)- None	(1)- None	(1)- None
10321	(3)- Medium	(2)- Low	(2)- Low
10322	(3)- Medium	(2)- Low	(2)- Low
10323	(1)- None	(1)- None	(1)- None
10325	(2)- Low	(1)- None	(2)- Low
10332	(1)- None	(1)- None	(1)- None
10333	(2)- Low	(1)- None	(2)- Low
10334	(1)- None	(1)- None	(1)- None
10335	(1)- None	(1)- None	(1)- None
10346	(1)- None	(2)- Low	(2)- Low
10347	(1)- None	(1)- None	(1)- None
10361			
10370			
10372	(3)- Medium	(1)- None	(2)- Low
10373	(1)- None	(1)- None	(1)- None
10393	(1)- None	(1)- None	(1)- None
10395	(2)- Low	(1)- None	(2)- Low
10397	(1)- None	(1)- None	(1)- None
10398	(2)- Low	(1)- None	(2)- Low
10399	(3)- Medium	(2)- Low	(2)- Low
10400	(2)- Low	(1)- None	(2)- Low
10401	(2)- Low	(1)- None	(2)- Low
10402	(2)- Low	(1)- None	(2)- Low
10403	(1)- None	(2)- Low	(2)- Low
10404			
10405	(1)- None	(1)- None	(1)- None
10406	(1)- None	(2)- Low	(2)- Low
10407	(1)- None	(1)- None	(1)- None
10408	(2)- Low	(1)- None	(2)- Low
10409	(2)- Low	(1)- None	(2)- Low

UID	Cleaning Priority	Repair Priority	Overall Priority
10410	(1)- None	(2)- Low	(2)- Low
10411	(1)- None	(1)- None	(1)- None
10412	(1)- None	(2)- Low	(2)- Low
10413	(2)- Low	(1)- None	(2)- Low
10414	(1)- None	(2)- Low	(2)- Low
10415	(1)- None	(1)- None	(1)- None
10416	(2)- Low	(1)- None	(2)- Low
10417	(1)- None	(3)- Medium	(3)- Medium
10418	(2)- Low	(1)- None	(2)- Low
10421	(2)- Low	(2)- Low	(2)- Low
10422	(2)- Low	(1)- None	(2)- Low
10423	(2)- Low	(1)- None	(2)- Low
10424	(1)- None	(1)- None	(1)- None
10425	(2)- Low	(1)- None	(2)- Low
10426	(3)- Medium	(2)- Low	(2)- Low
10427	(2)- Low	(2)- Low	(2)- Low
10428	(1)- None	(1)- None	(1)- None
10429	(1)- None	(2)- Low	(2)- Low
10430	(2)- Low	(4)- High	(4)- High
10431	(1)- None	(1)- None	(1)- None
10432	(1)- None	(1)- None	(1)- None
10433	(1)- None	(1)- None	(1)- None
10434	(2)- Low	(1)- None	(2)- Low
10435	(2)- Low	(3)- Medium	(3)- Medium
10436	(4)- High	(1)- None	(2)- Low
10437	(3)- Medium	(2)- Low	(2)- Low
10438	(2)- Low	(1)- None	(2)- Low
10439	(2)- Low	(1)- None	(2)- Low
10445	(3)- Medium	(3)- Medium	(3)- Medium
10453	(4)- High	(4)- High	(4)- High
10454	(1)- None	(1)- None	(1)- None
10455	(1)- None	(1)- None	(1)- None
10462	(2)- Low	(1)- None	(2)- Low
10463	(2)- Low	(3)- Medium	(3)- Medium
10482	(2)- Low	(1)- None	(2)- Low
10483	(3)- Medium	(2)- Low	(2)- Low
10484	(2)- Low	(1)- None	(2)- Low
10485	(2)- Low	(1)- None	(2)- Low
10486	(1)- None	(1)- None	(1)- None
10487	(1)- None	(1)- None	(1)- None
10488	(1)- None	(1)- None	(1)- None
10489	(1)- None	(3)- Medium	(3)- Medium
10754	(1)- None	(4)- High	(3)- Medium
10755	(1)- None	(1)- None	(1)- None
10756	(1)- None	(1)- None	(1)- None
10757	(2)- Low	(1)- None	(2)- Low
10758	(1)- None	(2)- Low	(2)- Low
10759	(1)- None	(1)- None	(1)- None
10763	(1)- None	(1)- None	(1)- None
10781	(2)- Low	(1)- None	(2)- Low
10782	(3)- Medium	(1)- None	(2)- Low
11074	(2)- Low	(1)- None	(2)- Low
11147	(1)- None	(1)- None	(1)- None
11149	(1)- None	(2)- Low	(2)- Low
11152	(2)- Low	(2)- Low	(2)- Low



<b>UID</b>	<b>Cleaning Priority</b>	<b>Repair Priority</b>	<b>Overall Priority</b>
11153	(2)- Low	(3)- Medium	(3)- Medium
11155	(1)- None	(2)- Low	(2)- Low
11157	(1)- None	(2)- Low	(2)- Low
11158	(2)- Low	(2)- Low	(2)- Low
11159	(1)- None	(2)- Low	(2)- Low
11160	(3)- Medium	(1)- None	(2)- Low
11161	(1)- None	(2)- Low	(2)- Low
11162	(2)- Low	(3)- Medium	(3)- Medium
11163	(2)- Low	(2)- Low	(2)- Low
11164	(1)- None	(1)- None	(1)- None
11165	(1)- None	(1)- None	(1)- None
11166	(1)- None	(1)- None	(1)- None
11167	(1)- None	(1)- None	(1)- None
11168	(3)- Medium	(3)- Medium	(3)- Medium
11169	(1)- None	(3)- Medium	(2)- Low
11170	(2)- Low	(3)- Medium	(3)- Medium
11171	(1)- None	(2)- Low	(2)- Low
11172	(1)- None	(1)- None	(1)- None
11173	(3)- Medium	(1)- None	(2)- Low
11174	(1)- None	(1)- None	(1)- None
11175	(3)- Medium	(4)- High	(4)- High
11176	(2)- Low	(2)- Low	(2)- Low
11179	(2)- Low	(1)- None	(2)- Low
11180	(1)- None	(1)- None	(1)- None
11181	(1)- None	(1)- None	(1)- None
11182	(4)- High	(1)- None	(3)- Medium
11183	(1)- None	(4)- High	(4)- High
11184	(2)- Low	(3)- Medium	(3)- Medium
11185	(2)- Low	(3)- Medium	(3)- Medium
11186	(1)- None	(1)- None	(1)- None
11187	(1)- None	(1)- None	(1)- None
11188	(2)- Low	(1)- None	(2)- Low
11189	(1)- None	(1)- None	(1)- None
11190	(1)- None	(1)- None	(1)- None
11191	(2)- Low	(1)- None	(2)- Low
11192	(1)- None	(1)- None	(1)- None
11234	(1)- None	(1)- None	(1)- None
11235	(2)- Low	(2)- Low	(2)- Low
11236	(1)- None	(3)- Medium	(2)- Low
11237	(1)- None	(1)- None	(1)- None
11240	(2)- Low	(1)- None	(2)- Low
11241	(2)- Low	(1)- None	(2)- Low
11247	(3)- Medium	(2)- Low	(2)- Low
11248	(2)- Low	(2)- Low	(2)- Low
11253	(1)- None	(1)- None	(1)- None
11254	(1)- None	(1)- None	(1)- None
11255	(2)- Low	(1)- None	(2)- Low
11325	(1)- None	(1)- None	(1)- None
11343	(1)- None	(1)- None	(1)- None
11344	(1)- None	(1)- None	(1)- None
11345	(1)- None	(1)- None	(1)- None
11350	(2)- Low	(2)- Low	(2)- Low
11351	(1)- None	(1)- None	(1)- None
11357	(1)- None	(1)- None	(1)- None
11358	(2)- Low	(1)- None	(2)- Low

UID	Cleaning Priority	Repair Priority	Overall Priority
11364	(3)- Medium	(2)- Low	(2)- Low
11366	(4)- High	(1)- None	(3)- Medium
11374	(3)- Medium	(2)- Low	(2)- Low
11376	(2)- Low	(1)- None	(2)- Low
11377	(2)- Low	(1)- None	(2)- Low
11378	(2)- Low	(1)- None	(2)- Low
11382	(3)- Medium	(1)- None	(2)- Low
11383	(3)- Medium	(2)- Low	(3)- Medium
11385	(2)- Low	(1)- None	(2)- Low
11386	(2)- Low	(1)- None	(2)- Low
11389	(5)- Highest	(3)- Medium	(4)- High
11391	(3)- Medium	(1)- None	(2)- Low
11392	(3)- Medium	(1)- None	(3)- Medium
11393	(2)- Low	(1)- None	(2)- Low
11394	(2)- Low	(2)- Low	(2)- Low
11395	(1)- None	(1)- None	(1)- None
11398	(2)- Low	(1)- None	(2)- Low
11405	(2)- Low	(1)- None	(2)- Low
11414	(3)- Medium	(1)- None	(2)- Low
11415	(2)- Low	(3)- Medium	(3)- Medium
11417	(2)- Low	(1)- None	(2)- Low
11503	(3)- Medium	(3)- Medium	(3)- Medium
11504	(1)- None	(1)- None	(1)- None
11511	(1)- None	(1)- None	(1)- None
11516	(1)- None	(1)- None	(1)- None
11517	(1)- None	(2)- Low	(2)- Low
11523	(2)- Low	(2)- Low	(2)- Low
11524	(3)- Medium	(1)- None	(2)- Low
11529	(1)- None	(1)- None	(1)- None
11532	(2)- Low	(1)- None	(2)- Low
11540	(1)- None	(1)- None	(1)- None
11541	(2)- Low	(1)- None	(2)- Low
11542	(1)- None	(1)- None	(1)- None
11543	(3)- Medium	(2)- Low	(2)- Low
11544	(1)- None	(3)- Medium	(3)- Medium
11565	(1)- None	(3)- Medium	(3)- Medium
11584	(1)- None	(2)- Low	(2)- Low
11598	(1)- None	(1)- None	(1)- None
12173	(1)- None	(1)- None	(1)- None
12175	(1)- None	(3)- Medium	(3)- Medium
12176	(2)- Low	(1)- None	(2)- Low
12177	(3)- Medium	(3)- Medium	(3)- Medium
12180	(1)- None	(2)- Low	(2)- Low
12183			
12184	(1)- None	(1)- None	(1)- None
12185	(1)- None	(3)- Medium	(3)- Medium
12187	(1)- None	(2)- Low	(2)- Low
12188	(2)- Low	(1)- None	(2)- Low
12192	(4)- High	(3)- Medium	(3)- Medium
12197			
12198	(1)- None	(1)- None	(1)- None
12217	(1)- None	(1)- None	(1)- None
12219	(1)- None	(1)- None	(1)- None
12220	(1)- None	(1)- None	(1)- None
12221	(1)- None	(1)- None	(1)- None

<b>UID</b>	<b>Cleaning Priority</b>	<b>Repair Priority</b>	<b>Overall Priority</b>
12222	(1)- None	(3)- Medium	(3)- Medium
12223	(1)- None	(2)- Low	(2)- Low
12226	(1)- None	(1)- None	(1)- None
12227	(1)- None	(1)- None	(1)- None
12458	(4)- High	(1)- None	(2)- Low
12460	(1)- None	(1)- None	(1)- None
12480	(2)- Low	(2)- Low	(2)- Low
12483	(1)- None	(1)- None	(1)- None
12484			
12485			
12489	(3)- Medium	(1)- None	(3)- Medium
12490	(2)- Low	(3)- Medium	(3)- Medium
12491	(2)- Low	(1)- None	(2)- Low
12501	(1)- None	(1)- None	(1)- None
12507			
12514	(1)- None	(2)- Low	(2)- Low
12515	(1)- None	(1)- None	(1)- None
12516			
12517	(1)- None	(3)- Medium	(3)- Medium
12524	(3)- Medium	(3)- Medium	(3)- Medium
12525			
12527	(2)- Low	(1)- None	(1)- None
12530			
12531	(2)- Low	(1)- None	(2)- Low
12532	(1)- None	(2)- Low	(2)- Low
12533	(4)- High	(2)- Low	(3)- Medium
12545	(3)- Medium	(1)- None	(2)- Low
12546	(1)- None	(1)- None	(1)- None
13750			
13752			
13753			
13755	(1)- None	(3)- Medium	(3)- Medium
13756	(1)- None	(3)- Medium	(3)- Medium
13757	(1)- None	(3)- Medium	(3)- Medium
13759	(2)- Low	(2)- Low	(2)- Low
13760	(2)- Low	(2)- Low	(2)- Low
13761			
13762			
13967			
13968			
13969			
13970			
13971	(3)- Medium	(3)- Medium	(3)- Medium
13972			
13978	(2)- Low	(1)- None	(2)- Low
13980	(1)- None	(1)- None	(1)- None
13981			
14010	(3)- Medium	(3)- Medium	(3)- Medium
14012	(2)- Low	(2)- Low	(2)- Low
14013	(2)- Low	(1)- None	(2)- Low
14014	(2)- Low	(1)- None	(2)- Low
14015	(1)- None	(1)- None	(1)- None
14032			
14064	(1)- None	(1)- None	(1)- None
14067			

<b>UID</b>	<b>Cleaning Priority</b>	<b>Repair Priority</b>	<b>Overall Priority</b>
14116			
14118	(2)- Low	(2)- Low	(2)- Low
14150			
15284	(2)- Low	(1)- None	(2)- Low