

Clinton Avenue and Badger Avenue Traffic Triangle



Subwatershed: Newark Airport
Peripheral Ditch

Site Area: 847 sq. ft.

Address: Clinton Avenue
Newark, NJ 07108

Block and Lot: Block 2682, Lot 1

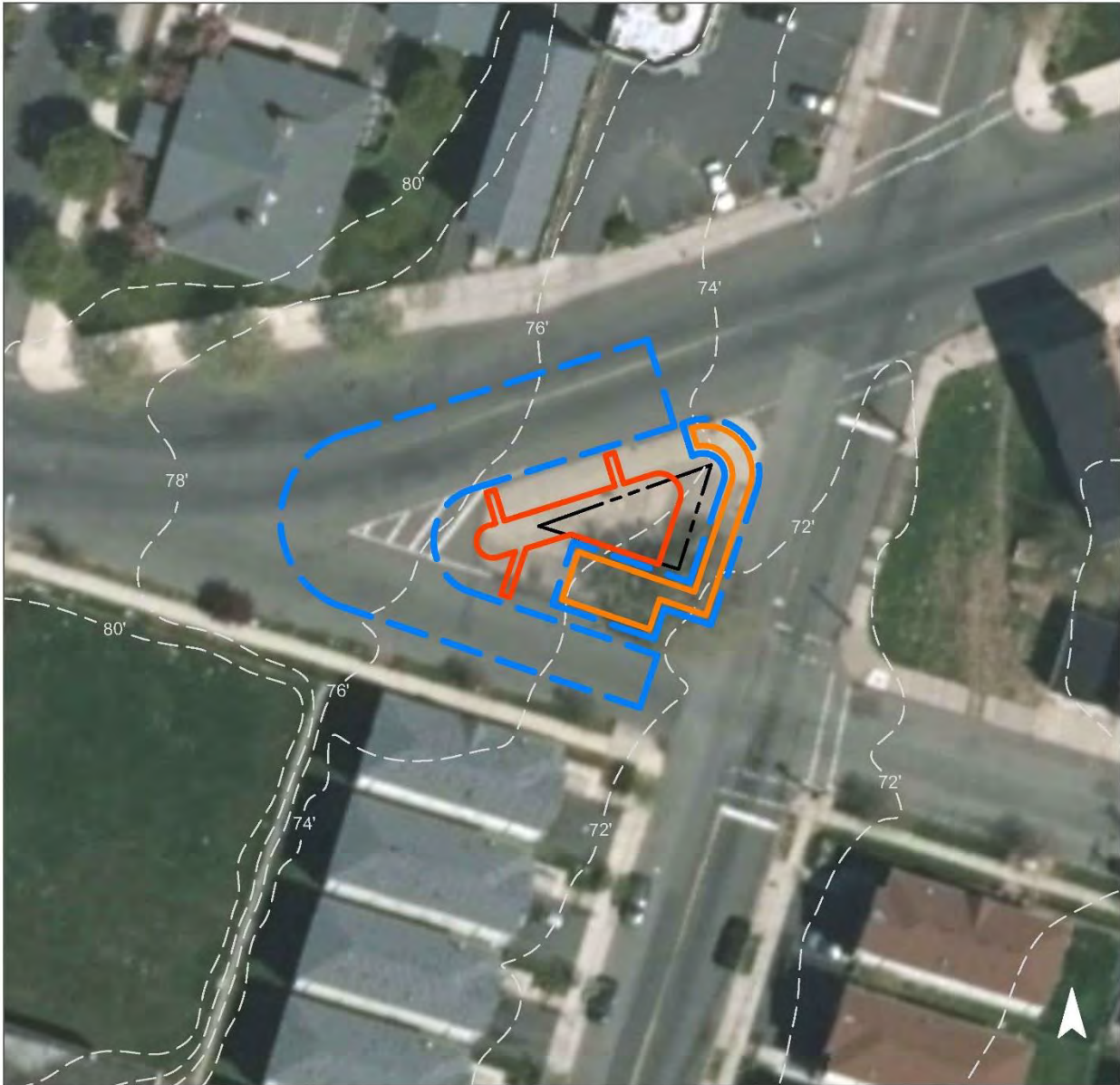


The traffic triangle was replaced with porous pavers, pervious concrete, and stormwater planters to capture, treat, and infiltrate stormwater from Clinton Avenue and Badger Avenue.






Impervious Cover		Existing Loads from Impervious Cover (lbs/yr)			Runoff Volume from Impervious Cover (Mgal)	
%	sq. ft.	TP	TN	TSS	For the 1.25" Water Quality Storm	For an Annual Rainfall of 44"
85	720	0.0	0.4	3.3	0.001	0.02

Recommended Green Infrastructure Practices	Recharge Potential (Mgal/yr)	TSS Removal Potential (lbs/yr)	Maximum Volume Reduction Potential (gal/storm)	Peak Discharge Reduction Potential (cu. ft./second)	Estimated Size (sq. ft.)	Estimated Cost
Pervious pavement	0.042	7	3,216	0.14	1,000	\$25,000
Stormwater planter	0.168	28	12,716	0.56	1,145	\$429,375

GREEN INFRASTRUCTURE RECOMMENDATIONS



Clinton Avenue and Badger Avenue Triangle

-  pervious pavement
-  stormwater planter
-  drainage area
-  property line
-  2015 Aerial: NJOIT, OGIS

