

Buena Vista Township Court Clerk



Subwatershed: Deep Run

Site Area: 168,656 sq. ft.

Address: 890 Harding Highway
Buena, NJ 08310

Block and Lot: Block 5301, Lot 2

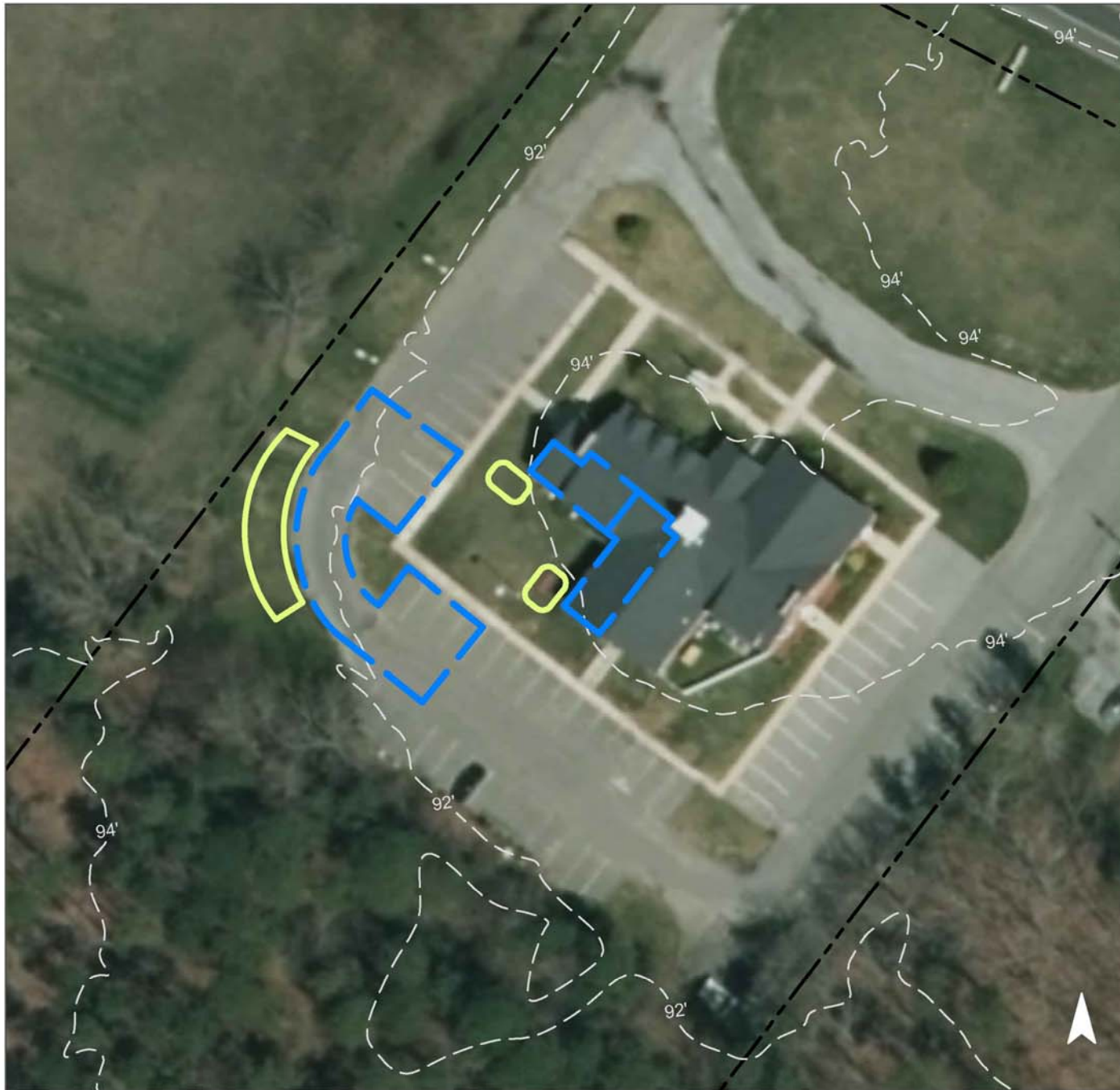


Two rain gardens can be installed at the two southwest facing sides of the building to capture, treat, and infiltrate rooftop runoff. Another rain garden can be placed adjacent to the rounded corner driveway west of the building to capture, treat, and infiltrate runoff from the impervious parking lot. A preliminary soil assessment suggests that the soils have suitable drainage characteristics for green infrastructure.





Impervious Cover		Existing Loads from Impervious Cover (lbs/yr)			Runoff Volume from Impervious Cover (Mgal)	
%	sq. ft.	TP	TN	TSS	For the 1.25" Water Quality Storm	For an Annual Rainfall of 44"
30	51,412	2.5	26.0	236.1	0.040	1.41

Recommended Green Infrastructure Practices	Recharge Potential (Mgal/yr)	TSS Removal Potential (lbs/yr)	Maximum Volume Reduction Potential (gal/storm)	Peak Discharge Reduction Potential (cu. ft./second)	Estimated Size (sq. ft.)	Estimated Cost
Bioretention systems	0.144	24	10,550	0.40	1,380	\$6,900

GREEN INFRASTRUCTURE RECOMMENDATIONS



Buena Vista Township Court Clerk

-  bioretention system
-  drainage area
-  property line
-  2015 Aerial: NJOIT, OGIS

