

Buena Regional Middle School



Subwatershed: Deep Run
Site Area: 1,428,945 sq. ft.
Address: 175 Weymouth Road
Buena, NJ 08310
Block and Lot: n/a

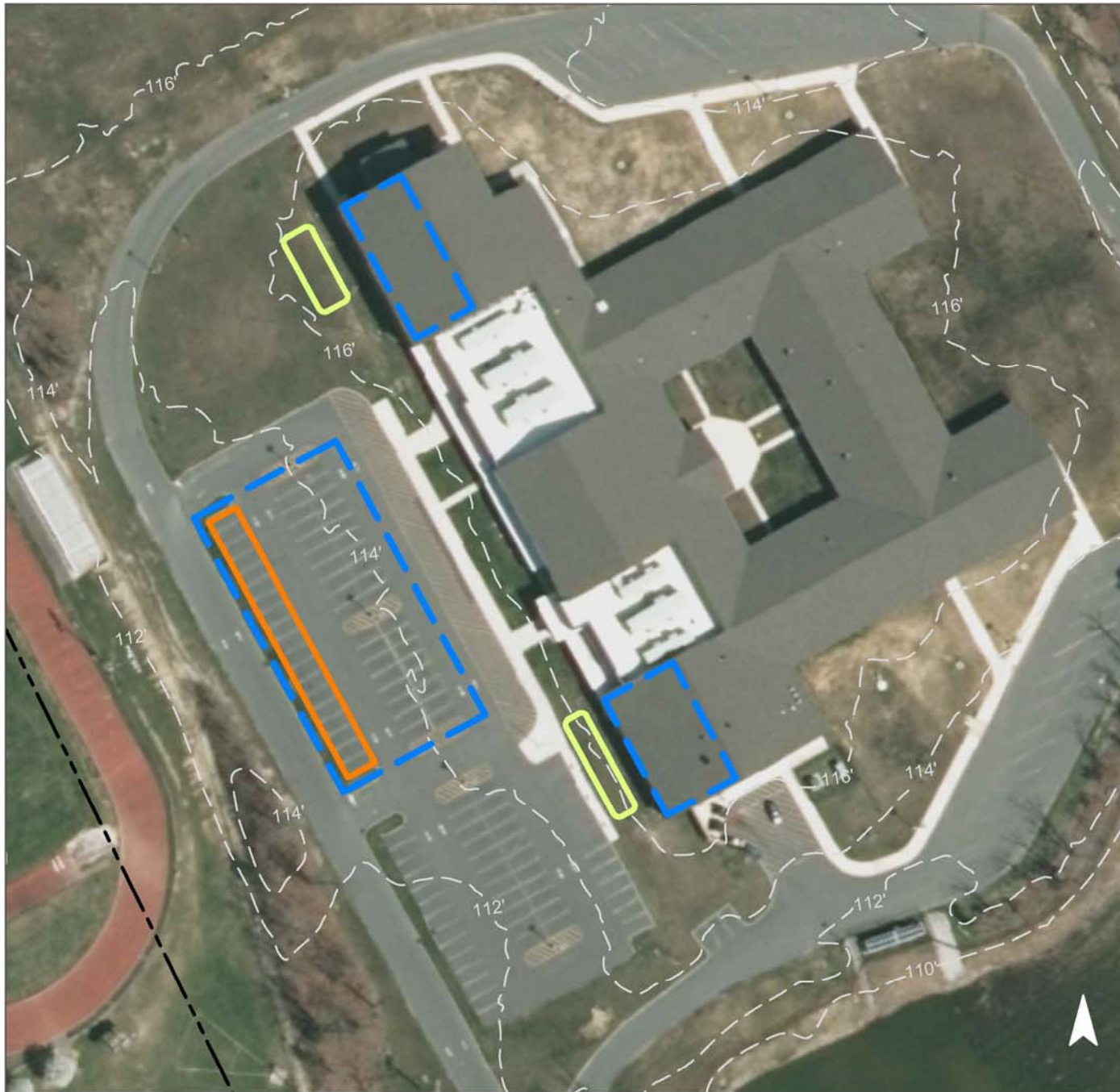


One rain garden can be installed north of the main entrance of the school as well as one south of the entrance to capture, treat, and infiltrate rooftop runoff. The row of parking spaces on the northwest side of the building can be replaced with pervious pavement to capture and infiltrate stormwater. A preliminary soil assessment suggests that the soils have suitable drainage characteristics for green infrastructure.






Impervious Cover		Existing Loads from Impervious Cover (lbs/yr)			Runoff Volume from Impervious Cover (Mgal)	
%	sq. ft.	TP	TN	TSS	For the 1.25" Water Quality Storm	For an Annual Rainfall of 44"
18	246,916	11.9	124.7	1,133.7	0.192	6.77

Recommended Green Infrastructure Practices	Recharge Potential (Mgal/yr)	TSS Removal Potential (lbs/yr)	Maximum Volume Reduction Potential (gal/storm)	Peak Discharge Reduction Potential (cu. ft./second)	Estimated Size (sq. ft.)	Estimated Cost
Bioretention systems	0.218	36	16,020	0.60	2,095	\$10,475
Pervious pavement	0.547	92	40,150	1.51	3,750	\$93,750

GREEN INFRASTRUCTURE RECOMMENDATIONS



Buena Regional Middle School

-  bioretention system
-  pervious pavement
-  drainage area
-  property line
-  2015 Aerial: NJOIT, OGIS

