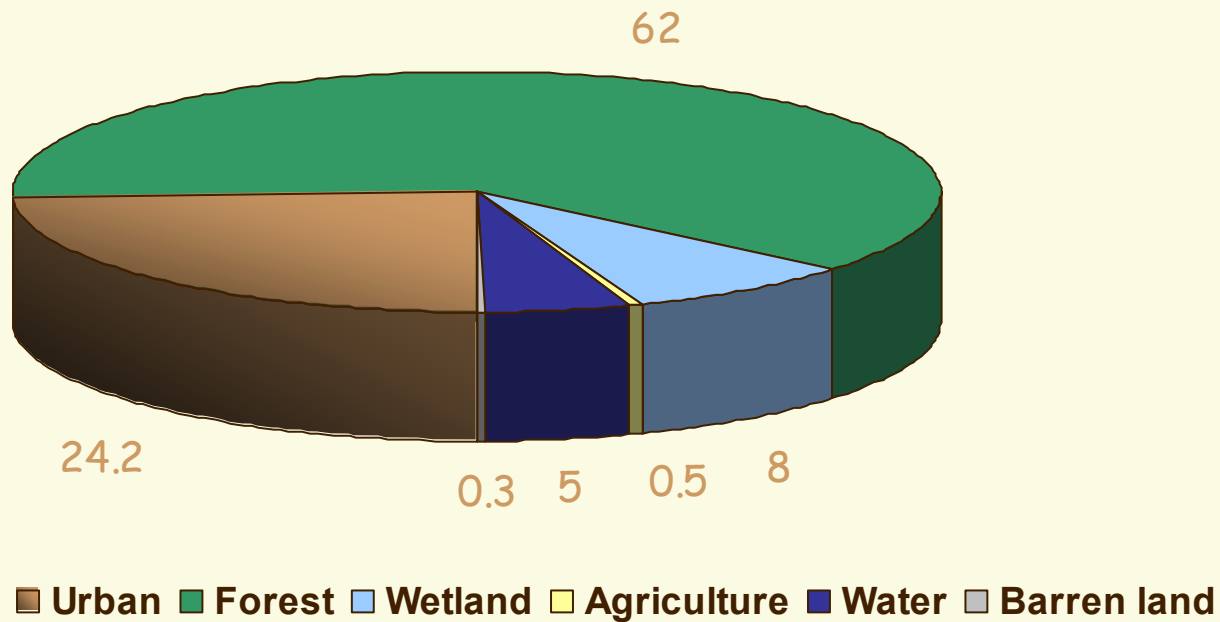


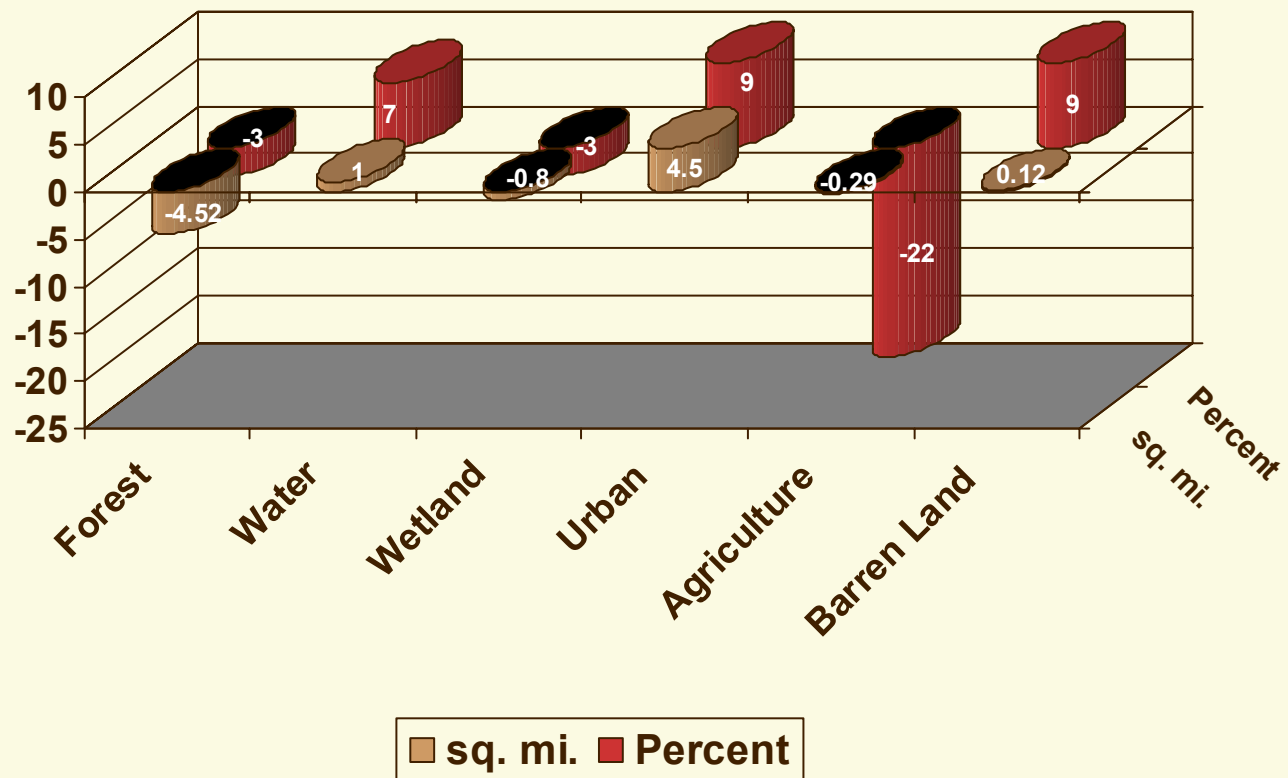
WMA 3 Watershed Characterization

Land Use



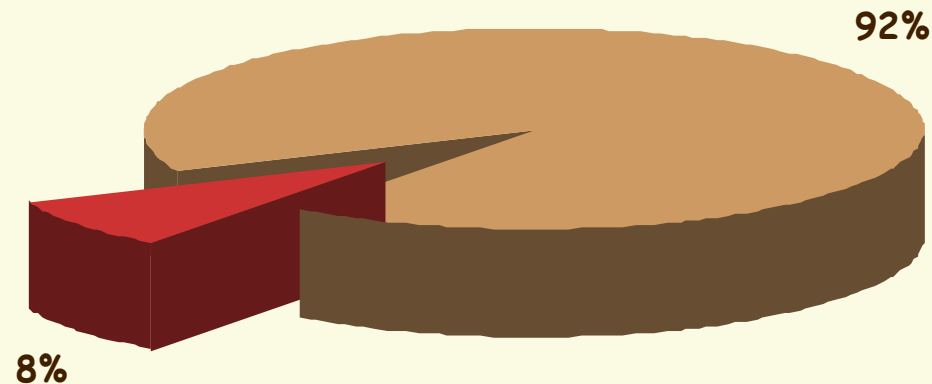
WMA 3 Watershed Characterization

Land Use Change from 1986 to 1995



WMA 3 Watershed Characterization

Source of Water Diversion in WMA3



 Surface  Ground

WMA 3 Water Diversions

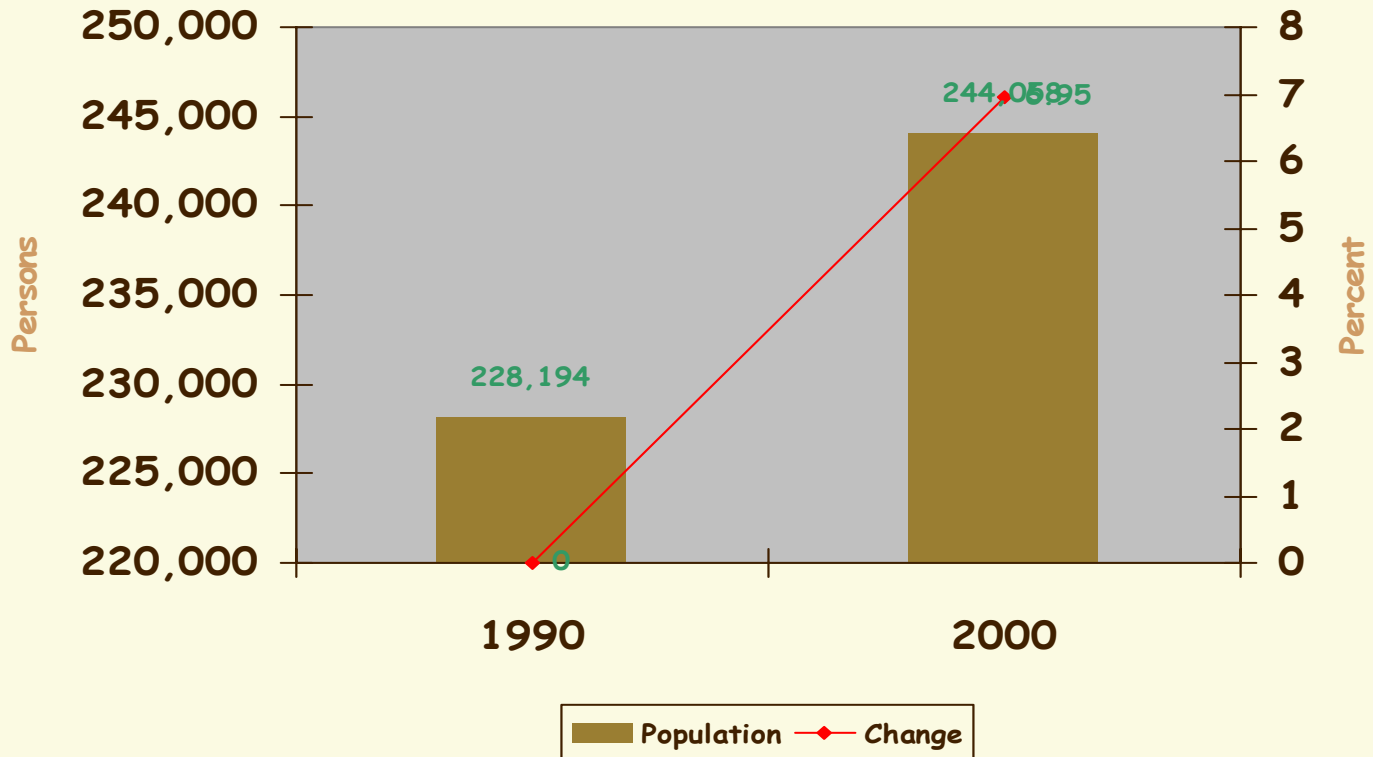


88.8 BGY diverted in WMA 3

- 99.9 % for public water supply
- WMA 3 diversion amount larger than WMA 4 + WMA 6 (78 BGY)
- 61 BGY surface water transferred out of WMA 3
- 6.8 BGY as groundwater used in WMA 3

WMA 3 Watershed Characterization


Population Change in 10 Years



WMA 3 Watershed Characterization

Watershed Stressors:

 Non-point sources: Stormwater runoff, golf courses & residential lawn areas

 Point sources: 41 (23 in NJ & 17 in NY) domestic permitted wastewater treatment facilities, total discharges 17.6 MGD. Two largest wastewater plants are: **Orange County Sewer District #1 facility (4 MGD) located at Harriman, NY and Two Bridge Sewerage Authority facility (7.5 MGD) located in Lincoln Park, NJ.**

WMA 3 Watershed Characterization

Percentage of Total Loading to
Waterways 1997-2000

